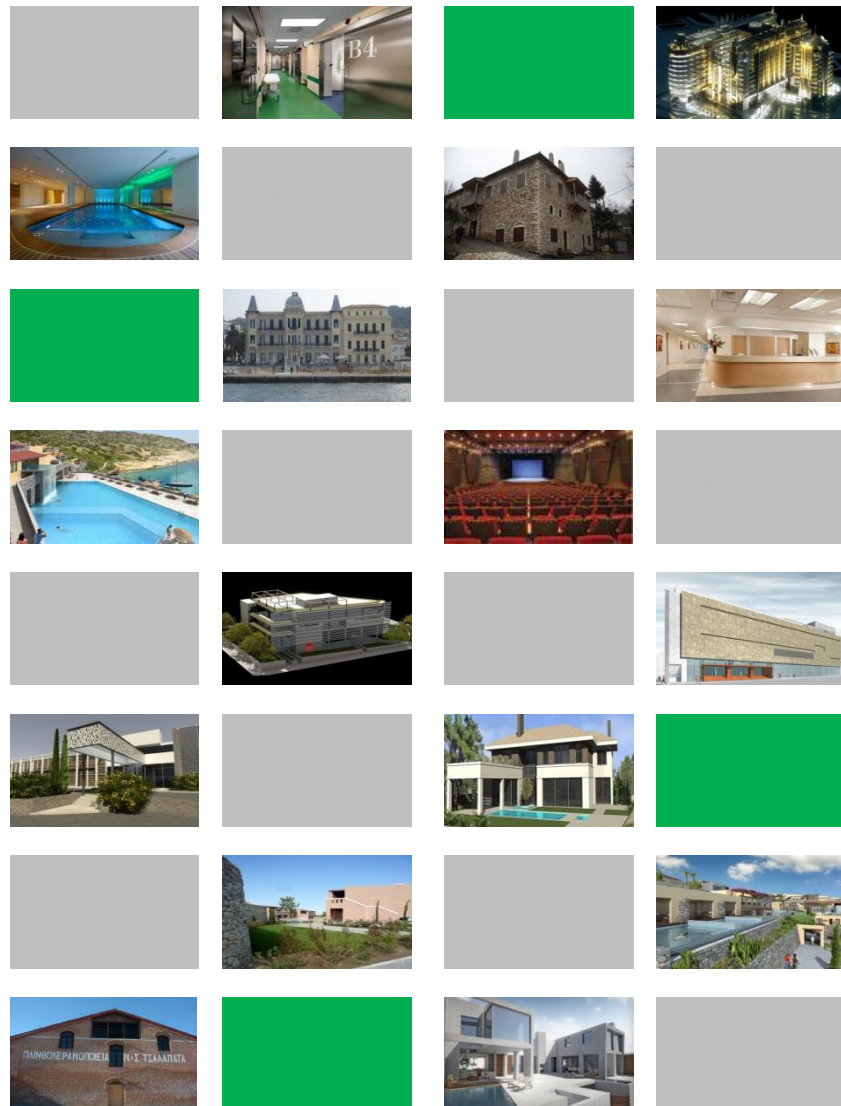


INSTA

CONSULTANTS ENGINEERS



COMPANY PROFILE

CONTENTS

■ COMPANY PROFILE

□ QUALITY ASSURANCE

□ STAFF

□ PROFESSIONAL EXPERIENCE – MOST IMPORTANT PROJECTS

1. GENERAL INFORMATION

TITLE:	INSTA Consultants Engineers	
ADDRESS:	52 Chiou Str., Ag. Paraskevi, 15343, Athens, Greece	
TELEPHONE:	(+30)2106398200	
FAX:	(+30)2106009288	
EMAIL:	insta@insta.gr, insta@otenet.gr	
WEB:	www.insta.gr	
STAFF:	permanent staff	13 people
	Experts available for occasional collaboration	6 people
MEMEBERSHIP:	TECHNICAL CHAMBER OF GREECE (TEE)	
	THE HELLENIC ASSOCIATION OF CONSULTING FIRMS (HELLASCO)	
	ASHRAE	
	N.F.P.A.	
	GREEK TECHNICAL CHAMBER INFORMATION BANK	
PARTNERS-DIRECTORS:	GALANIS KONSTANTINOS, Mechanical Engineer	
	ZOMPOLAS CHRISTOS, Mechanical Engineer	
	PROUNIAS NIKOLAOS, Electrical Engineer	

2. COMPANY PROFILE

INSTA Consultants Engineers LTD was established in 1984 by K. GALANIS as “K. GALANIS and Partners”. In 1996 company was renamed in “INSTA Consultants Engineers LTD”. In 1998 C. Zompolas joined the company and five years later (2003) N. Prounias joined in, giving firm’s the current partnership.

Having accumulated important experience in technical as well as administrative positions in large consulting firms before INSTA’s establishment, partners shared this experience under INSTA’s umbrella, undertaking and successfully implementing large scale and complex projects from the early beginning.

Due to the highly specialized area of the engineering provided services, human resources are considered as one of the most important driving factors for the company’s success. Therefore engineers and designers having many years of experience are being employed through long term collaboration. As a result a strong commitment between all parts has been achieved, having as main

aim the company's success. Specialists and external collaborators where specific demanded needs occur, through long term and successful relationship, providing INSTA the capability of implementing every kind of project no matter the scale or the complexity.

Due to project and client oriented approach, Company developed quickly, implementing a large variety of projects, gaining recognition in the Greek technical consultant and construction industry.

Industry fields where INSTA has a strong presence, is the tourist industry, residential projects, shopping malls, office buildings, logistic industry, museums as well as infrastructure.

INSTA offers integrated consulting MEP (Mechanical, Electrical, and Plumbing) Engineering Services covering all types of technical projects. Activities being covered are:

- Engineering design (conceptual, preliminary, design development, detail design)
- Tender documents preparation
- Design review
- Energy studies
- Feasibility studies
- Environmental impact Assessments
- Design supervision
- Due diligence
- Construction supervision
- Project management
- Project control and technical support

Due to the strong Economy growth company was mainly focused in local market. Recent Greek Economy recession turned company's origin abroad. Results of this effort is already visible through the projects are already have been undertaken and implemented in Doha Qatar. Three projects concerning hotel industry, food and beverage but also office industry have been already implanted, whilst other projects in cinema industry and commercial industry, are to be signed.

3. MISSION STATEMENT

Company's scope of activities is to offer consulting services (design, supervision, cost estimation, budgeting, due diligence, design evaluation, project management etc.) for mechanical, electrical and plumbing installations (MEP) in every type of building, infrastructure, landscape etc.

We adopt modern technologies and reliable solutions in the most technically efficient and correct way in order to provide our client with the most energy saving and cost effective installations.

We are strongly commitment to our customers' needs having as governing principles quality, flexibility and consistence aiming in our clients' satisfaction and trust. Knowing that a successful project implementation is a result of a team effort, we are also commitment to all project involved professionals, trying to add the maximum possible value.

Our vision is a continuous growth and evolution through successfully implemented projects, reliable relationships with our clients and other disciplines professional, continuous adapting and learning procedures in order to meet future challenges.

Important supportive tool to meet our goals is the ISO 9001:2015 quality Certificate Company has been awarded for engineering, planning and consulting by Bureau Veritas.

4. CLIENTS

4.1 Public Sector

Government Organizations, Local Authorities (Municipalities, Regional authorities), Ministries, Hospitals, Hellenic Civil Aviation, Public Power Corporation (PPC), Hellenic Organization of Telecommunications (OTE), Public Properties Company, e.t.c.

4.2 Private sector

Hotel Owners, Real Estate Developers, Individuals, Architects, Investors, Banks, Foundations, Companies, etc.

CONTENTS

☐ COMPANY PROFILE

☒ **QUALITY ASSURANCE**

☐ STAFF

☐ PROFESSIONAL EXPERIENCE – MOST IMPORTANT PROJECTS

BUREAU VERITAS
Certification



INSTA CONSULTANTS ENGINEERS LTD

52, Chiou Street, 153 43 Ag. Paraskevi – Athens
GREECE

Bureau Veritas Certification Holding SAS – UK Branch certify that the Management System of the above organisation has been audited and found to be in accordance with the requirements of the management system standards detailed below

ISO 9001:2015

Scope of certification

CONSULTING SERVICES, SUPERVISION, DESIGN OF MEP INSTALLATIONS, COST ESTIMATION, BUDGETING AND PREPARATION OF TENDER DOCUMENTS, DESIGN EVALUATION, INSTALLATION COMMISSIONING, PARTICIPATION IN PROJECT MANAGEMENT GROUPS FOR BUILDINGS, LANDSCAPE, INFRASTRUCTURE, ETC.

Original cycle start date:	01 March 2012
Expiry date of previous cycle:	28 February 2018
Recertification Audit date:	23 February 2018
Recertification cycle start date:	28 February 2018

Subject to the continued satisfactory operation of the organization's Management System, this certificate expires on: **28 February 2021**

Certificate No. GR18.3216Q/A Version : **No.1** Revision date: **28 February 2018**

Signed on behalf of BVCH SAS UK Branch
N. Trilizas

Certification body address: 5th Floor, 66 Prescott Street, London E1 8HG, United Kingdom
Local office: 23, Etolikou Str., 185 45 Piraeus, Greece



0008

Further clarifications regarding the scope of this certificate and the applicability of the management system requirements may be obtained by consulting the organisation.
To check this certificate validity please call: +30 210 40 63 000



CONTENTS

☐ COMPANY PROFILE

☐ QUALITY ASSURANCE

☒ **STAFF**

☐ PROFESSIONAL EXPERIENCE – MOST IMPORTANT PROJECTS

PERMANENT STAFF

The permanent staff of our firm as follows:

PARTNERS

GALANIS KONSTANTINOS *MECHANICAL ENGINEER*

ZOMPOLAS CHRISTOS *MECHANICAL ENGINEER*

PROUNIAS NIKOLAOS *ELECTRICAL ENGINEER, MBA*

MECHANICAL AND ELECTRICAL ENGINEER

7 STAFF

KOTSOPOULOS FOTIS *MSc MECHANICAL ENGINEER*

KOSTOGIANNOPOULOS ANDREAS *MECHANICAL ENGINEER N.T.U.A*

TIMOLEON ATHANASAKIS *MECHANICAL ENGINEER*

NIKOLAOS MOUZIS *MSc ELECTRICAL ENGINEER N.T.U.A*

PANAGIOTIS MPASDEKIS *MSc MECHANICAL ENGINEER*

KONSTANTINOS STERGIOU *MECHANICAL ENGINEER*

ΔΗΜΗΤΡΗΣ ΤΣΟΥΛΟΣ *MSc ELECTRICAL ENGINEER*

ADMINISTRATION DEPARTMENT

3 STAFF

KELESIDI MAGDA *DRAWING DEPARTMENT*

KALOFONOS IOANNIS *MARKETING, ADVERTISING & COMMUNICATIONS*

MAKRI EIRINI *ADMINISTRATION*

CONTENTS

❑ COMPANY PROFILE

❑ QUALITY ASSURANCE

❑ STAFF

■ PROFESSIONAL EXPERIENCE – MOST IMPORTANT PROJECTS

MAIN PROJECTS

ENTITY	PROJECT DESCRIPTION	PROJECT PERIOD	MEP BUDGET IN EURO
ATHENS MARRIOTT HOTEL	MEP DESIGN AND SUPERVISION FOR THE RENOVATION OF THE 5* HOTEL, 750 BED CAPACITY, AT SYGROU AVENUE IN ATHENS / CHANDRIS HOTELS AND INTEGRATION WITH MARRIOTT HOTELS COMPANY	2017-2018	3.000.000,00
EUPHORIA RETREAT EYOIKOS A.E.	MEP DESIGN AND SUPERVISION FOR NEW 5* HOTEL AND SPA IN MISTRAS LAKONIAS	2016-2018	5.000.000,00
HERMES GREECE S.A	MEP DESIGN AND SUPERVISION FOR THE HERMES RENOVATION AND EXTENSION EQUIPMENT, IN THE CITY LINK TRADE CENTER AT ATHENS	2016	600.000,00
INTERNATIONAL AIRPORT OF ATHENS " ELEFTHERIOS VENIZELOS "	MEP DESIGN FOR THE RENOVATION OF THE EXTRA SENGEN REGION	2015	1.000.000,00
SKLAVENITIS S.A	MEP DESIGN AND SUPERVISION FOR THE RENOVATION OF THE MAIN WAREHOUSES BUILDINGS AND REFORM TO OFFICE BUILDING , 10.000M ²	2014	4.000.000,00
AL MANA, FLIK CINEMAS DOHA QATAR	MEP DESIGN AND INSPECTION OF 8 SCREEN MULTIPLEX CINEMAS IN AL MIRQAB MALL , 1000 SEATS	2014-	2.000.000,00
AL MANA, FLIK CINEMAS DOHA QATAR	MEP DESIGN AND INSPECTION OF 4 SCREEN MULTIPLEX CINEMAS IN LAGOONA MALL	2014 -	800.000,00
AL ALFIA DOHA QATAR	MEP DESIGN AND INSPECTION OF AL MEERA SUPER MARKET AND MALL, HAZM AL MARKIHYA BRANCH 1.200M ²	2013 -2014	1.000.000,00
QIS, DOHA QATAR	MEP DESIGN AND INSPECTION OF QIS HEAD QUARTERS AT 41th FLOOR OF PALM TOWERS, 1.200M ²	2012-2013	750.000,00
AL MATAR HOTEL DEVELOPMENT DOHA, QATAR	MEP PRELIMINARY DESIGN OF AL MATAR HOTEL DEVELOPMENT DOHA, QATAR. NEW 7-STOREY HOTEL, SUITES, SPA, RESTAURANTS, CONFERENCE AND MULTIPURPOSE SPACES BUILDING, 700 BEDS, 90.000,00 m ² .	2014-2018	50.000.000,00
HOLMES PLACE	MEP DESIGN AND SUPERVISION OF INSTALLATION FOR THE GYM HOLMES PLACE IN GLIFADA.	2010	1.500.000,00
SARNITEC AE	MEP DESIGN AND SUPERVISION OF INSTALLATION FOR PEDIATRICS CLINIC IN 5th FLOOR OF HOSPITAL " MOTHER ".	2010	800.000,00
SARNITEC AE	MEP DESIGN AND SUPERVISION OF INSTALLATION FOR MODERNIZATION AND CREATION OF SURGERY DAY CLINIC UNIT OF THE HOSPITAL "MOTHER".	2010	1.500.000,00

MOTODYNAMICS AE	MEP DESIGN AND SUPERVISION OF INSTALLATION FOR THE NEW BUILDING AND WAREHOUSE 15,000 m2 OFFICE BUILDING 3,000 M2 ASPROPIRGOS ATTICA.	2008-2009	3.000.000,00
NEW HOTEL – YES HOTELS	MEP DESIGN AND SUPERVISION OF INSTALLATION FOR 5* HOTEL RENOVATION IN ROAD FILELLINON ATHENS.	2007-2011	2.000.000,00
DAIOS COVE LUXURY RESORT & VILLAS - HELLAS HOLIDAY HOTELS	MEP DESIGN AND SUPERVISION OF INSTALLATION FOR 5* HOTEL COMPLEX WITH 800 BEDS THALASSOTHERAPY CENTER AND CONFERENCE CENTER 400 PEOPLE IN SAINT NIKOLAOS IN CRETE.	2006- 2011	16.000.000,00
POSEIDONION GRAND HOTEL – INITIATIVE SPETSON SA	MEP DESIGN AND SUPERVISION OF INSTALLATION FOR HOTEL RENOVATION "neptunium" IN SPETSES.	2006	1.000.000,00
GAS SUPPLY COMPANY OF ATTICA ATTICA SA	MEP DESIGN AND SUPERVISION OF INSTALLATION UNITS ΣΗΘ-Ψ (CO-POWER-HEAT-COOL) USING NATURAL GAS IN 'EVAGELISMOS HOSPITAL," "C. GENNIMATAS", "SISMANOGLIO' , 'REGIONAL HOSPITAL ATTICA', 'REGIONAL HOSPITAL BY ATTICA "FULL VERSION AND STUDIES AND SUBMISSION FOR THE ISSUANCE AND INTEGRATION IN ACTION 2.1.4 FOR THE OPERATIONAL PROGRAMME COMPETITIVENESS.	2005	3.500.000,00
ERRICSSON HELLAS	MEP DESIGN AND SUPERVISION FOR PARTICIPATION IN PROJECT MANAGEMENT TEAM OF YOUNG CENTRAL OFFICE OF COMPANY ERRICSSON HELLAS ATTIKI ODOS.	2004-2005	1.500.000,00
NEOCHIMIKI SA	MEP DESIGN AND SUPERVISION OF INSTALLATION FOR 5 STOREY OFFICE BUILDING COMPANY NEOCHIMIKI SA ON THE ROAD TO PENTELIS STREET.	2004-2006	700.000,00
KANTOR SA	MEP DESIGN AND SUPERVISION OF INSTALLATION FOR MAIN BUILDING OFFICE OF COMPANY DIRECTORS KANTOR ON THE ROAD HOMER IN ATHENS AND VISSARIONOS.	2004-2006	700.000,00
NATIONAL MUSEUM OF CONTEMPORARY ART	MEP DESIGN AND SUPERVISION OF INSTALLATION FOR THE NATIONAL MUSEUM OF CONTEMPORARY ART IN OLD BUILDING FIX.	2004-2006	11.000.000,00
OTE	MEP DESIGN AND SUPERVISION OF INSTALLATION FOR 100 RETAIL ESTABLISHMENTS OTE-SHOPS IN GREECE.	2004	5.000.000,00
PUBLIC	MEP INSTALLATIONS DESIGN AND SUPERVISION FOR 2000 m2 PUBLIC BRANCHS IN "MEDITERRANEAN COSMOS" MALL IN THESSALONIKI	2004	2.200.000,00
GREEK AMERICAN ARTS CENTER CHALANDRIOY	MEP DESIGN AND SUPERVISION OF INSTALLATION FOR ONE THE BASKETBALL COURT AND SWIMMING IN AREAS OF ACS.	2003-2004	1.000.000,00
NIKOPOLIS HOTEL	MEP DESIGN AND SUPERVISION OF INSTALLATION FOR "NIKOPOLIS" (KEMPINSKI NIKOPOLIS), CLASS 5 * 200 BEDS WITH CONFERENCE CENTER AND SPA IN THESSALONIKI.	2003	1.761.000,00

NATIONAL FOUNDATION EVANGELISTRIAS VIRGIN TINOI	MEP DESIGN AND SUPERVISION OF INSTALLATION FOR PLANT RENOVATION OFFICES AND SPACE MUSEUM AND SUPPORT THE FOUNDATION.	2003-2004	1.800.000,00
VOGIATZOGLU SYSTEMS S.A	MEP DESIGN AND SUPERVISION OF INSTALLATION FOR GENERAL WAREHOUSE IN 20.000 m2 IN INOPIA.	2002	1.500.000,00
COMMISSION PROMOTION & CONSOLIDATION OF ARCHAEOLOGICAL SITES MARATHON	MEP DESIGN AND SUPERVISION OF INSTALLATION FOR PLANT MUSEUM RENOVATION & SURROUNDINGS.	2002-2003	250.000,00
NTUA (NATIONAL TECHNICAL UNIVERSITY)	CONSTRUCTION DESIGN OF MEP INSTALLATIONS AND SUPERVISION FOR THE "OLYMPIC MEDIA VILLAGE" IN ATTICA, 800 BEDS CAPACITY.	2002	4.000.000,00
ATHENS TRANSPORT S.A	MEP DESIGN AND SUPERVISION OF "STATION PEACE" FOR RENEWAL.	2001-2002	1.000.000,00
EUREKA HELLAS SA	MEP DESIGN AND SUPERVISION OF INSTALLATION FOR EUREKA OFFICE IN HELLAS SA IN LYKOVRYSI ATTICA.	2001-2002	
ERGOSE S.A. (GREEK RAILWAY ORGANIZATION)	MEP DESIGN AND SUPERVISION OF INSTALLATION FOR BUILDING DEPOT OSE IN THRIASIO.	2001	2.800.000,00
MINISTRY OF JUSTICE	MEP DESIGN AND SUPERVISION OF INSTALLATION FOR COURTHOUSE IN TRIKALA.	2000	2.935.000,00
P. BITSOS & Co.	MEP DESIGN AND SUPERVISION OF INSTALLATION FOR GROUP SIX BLOCKS OF FLATS 5-STOREY VERA IN ATHENS MAROUSI.	2000	8.500.000,00
MUNICIPALITY KALAMATAS	MEP DESIGN AND SUPERVISION OF INSTALLATION FOR RENEWAL HISTORICAL CENTRE IN KALAMATA.	1998	196.000,00

PROFESSIONAL EXPERIENCE BY CATEGORY**HOTELS**

ENTITY	PROJECT DESCRIPTION	PROJECT PERIOD	MEP BUDGET IN EURO
KENSHŌ PSAROU KENSHŌ BOUTIQUE HOTEL & SUITES	MEP DESIGN AND SUPERVISION OF INSTALLATION FOR 5* HOTEL IN PSAROU MYKONOS	2018	800.000,00
ATHENS MARRIOTT HOTEL	MEP DESIGN AND SUPERVISION FOR THE RENOVATION OF 5* HOTEL, 750 BED CAPACITY, AT SYGROU AVENUE IN ATHENS / CHANDRIS HOTELS AND INTEGRATION WITH MARRIOTT HOTELS COMPANY	2017-2018	3.000.000,00
EUPHORIA RETREAT EYOIKOS A.E.	MEP DESIGN AND SUPERVISION FOR NEW 5* HOTEL AND SPA IN MISTRAS LAKONIAS	2016-2018	5.000.000,00
MYKONOS RIVIERA HOTEL & SPA	MEP DESIGN AND SUPERVISION OF INSTALLATION FOR NEW 5* HOTEL IN TOURLOS MYKONOS	2017-2018	2.000.000,00
G.D. FRONTLINE	MEP DESIGN AND SUPERVISION OF INSTALLATION FOR BOUTIQUE HOTEL, 36 BED CAPACITY IN 9 EVAGELISTRIAS st, ATHENS	2017-2018	400.000,00
AINOS S.A	MEP DESIGN AND SUPERVISION OF INSTALLATION FOR THE RENOVATION OF HOTEL "AINOS" IN KEFALONIA	2016	500.000,00
LAKIANI A.E.	MEP DESIGN AND SUPERVISION FOR THE RENOVATION OF EXISTING HOTEL IN GLYFADA	2016	1.500.000,00
ANTIPAROS TOURIST ENTERPRISES	MEP DESIGN AND SUPERVISION OF INSTALLATION FOR NEW HOTEL COMPLEX OF 10 INDEPENDENT FURNISHED APARTMENTS WITH POOL IN ANTIPAROS	2016-2019	600.000,00
DUSIT THANI HOTEL & SPA	MEP DESIGN AND SUPERVISION OF INSTALLATION FOR THE RENOVATION OF THE 5 * HOTEL, 60 BEDS CAPACITY IN GLYFADA ATHENS	2016	1.600.000,00
ALIKA S.A.	MEP DESIGN AND SUPERVISION OF INSTALLATION FOR THE RENOVATION OF THE SIX FLOOR STOREY BUILDING FOR CREATION 20 RENTED APARTMENTS IN PLAKA ATHENS	2015-2016	400.000,00
CORFU PYRGI RESIDENCE	MEP DESIGN AND SUPERVISION OF INSTALLATION FOR THE RENOVATION OF THE 5 * HOTEL, 70 BEDS CAPACITY IN PYRGI, CORFU.	2015	1.000.000,00
PETER & PAULS VILLAGE S.A.	MEP DESIGN AND SUPERVISION OF INSTALLATION FOR 5* HOTEL WITH CONFERENCE CENTER AND TOURISTS RESIDENCE 343 BEDS CAPACITY IN PLATANA LAKONIAS	2015	12.000.000,00
HOTEL "TITANIA"	MEP DESIGN AND SUPERVISION OF INSTALLATION FOR THE ROOM RENOVATION OF "TITANIA" HOTEL	2015	2.000.000,00

TOURIST ENTERPRISES SA CHALKIDIKI	MEP DESIGN AND SUPERVISION OF INSTALLATION FOR THE NEW 5 * HOTEL, 80 BEDS CAPACITY IN OURANOYPOLI CHALKIDIKI	2013-2016	2.400.000,00
ZERBOS S.A	MEP DESIGN AND SUPERVISION OF INSTALLATION FOR THE NEW 5 * HOTEL, 150 BEDS CAPACITY IN MYKONO.	2013-2015	13.000.000,00
TOURIST HOTEL BUSINESS BROS N . PEROGIANNOI SA	MEP DESIGN AND SUPERVISION OF INSTALLATION FOR THE RENOVATION FOR THE 4* HOTEL "OMALOS" IN CHANIA, CRETE ISLAND.	2012-2014	600.000,00
AL MATAR HOTEL DEVELOPMENT DOHA, QATAR	MEP PRELIMINARY DESIGN OF AL MATAR HOTEL DEVELOPMENT DOHA, QATAR. NEW 7-STOREY HOTEL, SUITES, SPA, RESTAURANTS, CONFERENCE AND MULTIPURPOSE SPACES BUILDING, 700 BEDS, 90.000,00 m2.	2014- 2018	50.000.000,00
EVROTOURISTIKI ARGOLIDOS SA	MEP DESIGN AND SUPERVISION OF INSTALLATION FOR THE NEW 5 * HOTEL AT KIO ISLAND, NAYPLIO.	2010	1.000.000,00
THRAKI PALACE HOTEL & CONFERENCE CENTER	CONSTRUCTION DESIGN OF MEP INSTALLATIONS AND SUPERVISION FOR THE 5* "THRAKI PALACE HOTEL & CONFERENCE CENTER" FOR NEW SPA & GYM AREA, IN ALEXANDROUPOLIS.	2009	850.000,00
SAMARIA HOTEL – Bros PEROGIANNI SA	CONSTRUCTION DESIGN OF MEP INSTALLATIONS AND SUPERVISION FOR RENOVATION, EXPANSION AND JOINING THE EXISTING HOTELS "SAMARIA" AND "OMALOS" IN A 5* "SAMARIA HOTEL" IN CHANIA, CRETE ISLAND, 180 BEDS CAPACITY.	2009-2013	2.000.000,00
HORIZON HOTEL HORIZON A.E..T.T.K.E	CONSTRUCTION DESIGN OF MEP INSTALLATIONS AND SUPERVISION FOR THE 5* "HORIZON HOTEL" IN KALAMATA, 150 BEDS CAPACITY.	2009-2013	2.500.000,00
GRAND MEDITERRANEO RESORT & SPA - HOTEL TOURIST & BUSINESS REAL ESTATE UTILIZATION LIMBANTSIS-MORAETIS SA	CONSTRUCTION DESIGN OF MEP INSTALLATIONS AND SUPERVISION FOR THE 5* "GRAND MEDITERRANEO RESORT & SPA" IN CORFU ISLAND, 600 BED CAPACITY.	2008-2010	10.000.000,00
AQUILA ELOUNDA VILLAGE	CONSTRUCTION DESIGN OF MEP INSTALLATIONS AND SUPERVISION FOR THE ADDITION AND EXPANSION FOR A NEW BUILDING 130 BEDS CAPACITY, RENOVATION FOR RECEPTION AND RESTAURANT AREA, AND CREATION OF NEW SPA AREA FOR THE 5* "AQUILA ELOUNDA VILLAGE" IN ELOUNDA CRETE ISLAND.	2008-2009	3.000.000,00
NEW HOTEL – YES HOTELS	CONSTRUCTION DESIGN OF MEP INSTALLATIONS AND SUPERVISION FOR THE RENOVATION OF THE 5* "NEW HOTEL" (FORMER OLYMPIC PALACE) IN 16 FILELLINON STREET IN ATHENS, 150 BEDS CAPACITY.	2007-2011	2.000.000,00
HELONA RESORT – DOUBLETREE BY HILTON RESORT, KOS	CONSTRUCTION DESIGN OF MEP INSTALLATIONS AND SUPERVISION FOR THE 5* "HELONA RESORT" AT KARDAMAINA-KOS ISLAND, 500 BEDS CAPACITY.	2007-2009	7.000.000,00
AMATHUS BEACH HOTEL RHODES	CONSTRUCTION DESIGN OF MEP INSTALLATIONS AND SUPERVISION FOR THE EXPANSION AND FORMULATION AREAS IN 5* "ANATHUS BEACH HOTEL RHODES" (ADDITIONAL VILLAS AND SPA	2007-2008	2.000.000,00

AREA - 1500m²) IN RHODES ISLAND.

NOVOTEL ATHENS	MEP DESIGN AND SUPERVISION OF INSTALLATION FOR THE RENOVATION OF GROUND FLOOR PUBLIC SPACES IN 4* HOTEL, 400 BEDS CAPACITY.	2007	100.000,00
DAIOS COVE LUXURY RESORT & VILLAS - HELLAS HOLIDAY HOTELS	CONSTRUCTION DESIGN OF MEP INSTALLATIONS AND SUPERVISION FOR THE 5* "DAIOS COVE LUXURY RESORT & VILLAS" 800 BEDS CAPACITY, WITH THALASSOTHERAPY AND CONFERENCE CENTER 400 PEOPLE CAPACITY IN AG. NICOLAOS, CRETE ISLAND.	2006-2010	16.000.000,00
SITIA BEATCH HOTEL - GREEK TOURIST HOTELS CRETE SA	MEP DESIGN AND SUPERVISION OF INSTALLATION FOR THE RENOVATION OF HOTEL 350 BEDS CAPACITY IN SITIA, CRETE.	2006	600.00,00
MOSIALOS LEONIDAS	MEP DESIGN AND SUPERVISION OF INSTALLATION FOR NEW 4* HOTEL IN IOANNINA.	2006	
POSEIDON RESORT - ELINTOUR SA	MEP DESIGN AND SUPERVISION OF INSTALLATION FOR RECONSTRUCTION OF 70 ROOMS FOR 5* HOTEL IN LOUTRAKI.	2006	1.500.000,00
POSEIDON RESORT - ELINTOUR SA	MEP DESIGN AND SUPERVISION OF INSTALLATION FOR RENOVATION IN RECEPTION BUILDING FOR 5* HOTEL IN LOUTRAKI.	2006	80.000,00
KONTOKALI BAY RESORT & SPA - KONTOKALI SA	MEP DESIGN AND SUPERVISION OF INSTALLATION FOR 5* SPA HOTEL WITH 550 BEDS CAPACITY IN CORFU.	2006	150.000,00
POSEIDONION GRAND HOTEL- INITIATIVE SPETSON SA	CONSTRUCTION DESIGN OF MEP INSTALLATIONS AND SUPERVISION FOR THE FOR THE RENOVATION OF THE 5* "POSEIDONION GRAND HOTEL" IN SPETSES ISLAND.	2006	1.000.000,00
GALAXY HOTEL IRAKLIO - OIKONOMOU SA	MEP DESIGN AND SUPERVISION OF INSTALLATION FOR 5* HOTEL RENOVATION IN HERAKLIO CRETE.	2006	700.000,00
GRAND SERAI - XENIA MITSIS HOTELS	MEP DESIGN AND SUPERVISION OF INSTALLATION FOR THE RENOVATION OF 5* HOTEL (FORMERLY "XENIA") IN IOANNINA.	2006	3.000.000,00
HOTEL "ZATOUNA" - LEGACY P. Ch LYMPEROPOULOU	MEP DESIGN AND SUPERVISION OF INSTALLATION FOR CONVERSION OF TWO OLD BUILDINGS IN HOTEL IN ZATOUNA.	2006	250.000,00
PALIRIA HOTEL	CONSTRUCTION DESIGN OF MEP INSTALLATIONS AND SUPERVISION FOR THE RENOVATION OF THE 3* "PALIRIA HOTEL" IN CHALCIS EVIA ISLAND, 150 ROOMS CAPACITY.	2004	1.000.000,00
Bros GIAMA SA	MEP DESIGN AND SUPERVISION OF INSTALLATION FOR NEW 6 FLOORS HOTEL (LUX CATEGORY) WITH AND 4 BASEMENTS, IN ATHENS.	2003-2004	1.600.000,00
POSEIDON RESORT - ELINTOUR SA	MEP DESIGN AND SUPERVISION OF INSTALLATION FOR SPACE CONVERSION TO 500 PEOPLE CONFERENCE CENTER AND RENOVATION OF RESTAURANT - BAR.	2003-2004	800.000,00
SCHOOL OF FINE ARTS	MEP DESIGN AND SUPERVISION OF INSTALLATION OF ARTISTIC STATION WITH GUEST IN, MONODENDRI IOANNINON	2003-2004	250.000,00

ALBATROS HOTEL	MEP DESIGN AND SUPERVISION OF RENOVATION FOR A HOTEL, IN ATHENS.	2003	1.200.000,00
NIKOPOLIS HOTEL	CONSTRUCTION DESIGN OF MEP INSTALLATIONS AND SUPERVISION FOR THE 5* "NIKOPOLIS HOTEL" WITH CONFERENCE CENTER AND SPA IN THESSALONIKI, 200 ROOMS CAPACITY.	2003	1.761.000,00
GERAKINA BEACH HOTEL – GERAKINA S.A	MEP DESIGN AND SUPERVISION OF INSTALLATION OF FACILITIES TO RENOVATE SPACE LOBBY, RESTAURANT AND BAR OF HOTELS, CHALKIDIKI.	2003	100.000,00
KING JASON HOTEL – K. DOUROS SA	MEP DESIGN AND SUPERVISION OF INSTALLATION TO RENOVATE KING JASON HOTEL, ATHENS.	2003	
PLAZA RESORT AQUIS - AVRANTINIS K.	CONSTRUCTION DESIGN OF MEP INSTALLATIONS AND SUPERVISION FOR THE 5* "PLAZA RESORT AQUIS" IN ANAVYSSOS, 100 ROOMS CAPACITY.	2002-2003	3.000.000,00
CENTRAL ATHENS HOTEL	MEP DESIGN AND SUPERVISION OF INSTALLATION FOR FACILITIES RENOVATION FOR 3* HOTEL (Formerly "Aphrodite"), 84 BEDS, ATHENS.	2002-2003	400.000,00
BEST WESTERN AMAZON HOTEL – AKTE S.A	MEP DESIGN AND SUPERVISION OF INSTALLATION FOR PLANT RENOVATION HOTEL, ATHENS	2002-2003	550.000,00
NATIONAL TECHNICAL UNIVERSITY OF ATHENS	CONSTRUCTION DESIGN OF MEP INSTALLATIONS AND SUPERVISION FOR THE "OLYMPIC MEDIA VILLAGE" IN ATTICA, 800 BEDS CAPACITY.	2002	4.000.000,00
KRONOS HOTEL	MEP DESIGN AND SUPERVISION OF INSTALLATION FOR PLANT RENOVATION FOR HOTELIN ATHENS.	2002	350.000,00
AIROTEL STRATOS VASSILIKOS HOTEL	MEP DESIGN AND SUPERVISION OF INSTALLATION FOR FACILITIES RENOVATION, 4* HOTEL (FORMER "RIVA"), ATHENS.	2002	750.000,00
BEST WESTERN ESPERIA PALACE HOTEL	MEP DESIGN AND SUPERVISION OF INSTALLATION FOR FACILITIES RENOVATION FOR RESTAURANT HOTEL, ATHENS.	2002	50.000,00
THE ATHENIAN CALLIRHOE EXCLUSIVE HOTEL	MODIFICATION OF DESIGNS IN MEP INSTALLATIONS AND SUPERVISION FOR THE RENOVATION OF THE 4* "ATHENIAN CALLIRHOE EXCLUSIVE HOTEL" (FORMER "CHRISTINA") IN ATHENS.	2002	700.000,00
HORIZON BEACH RESORT	CONSTRUCTION DESIGN OF MEP INSTALLATIONS AND SUPERVISION FOR THE 4* "HORIZON BEACH RESORT" AND BUNGALOWS IN KOS ISLAND, 600 BEDS CAPACITY.	2001-2002	1.300.000,00
ALYKANAS VILLAGE HOTEL	MEP DESIGN AND SUPERVISION OF INSTALLATION FOR HOTEL FACILITIES, ZANTE ISLAND.	2001	440.000,00
PROMETHEUS GAS A.E.	MEP DESIGN AND SUPERVISION OF INSTALLATION FOR HOTEL "STADION" AND CONVERSION OF A CLASS B TO CLASS, 5*.	2000-2001	558.000,00
THRAKI PALACE HOTEL & CONFERENCE CENTER	CONSTRUCTION DESIGN OF MEP INSTALLATIONS AND SUPERVISION FOR THE 5* "THRAKI PALACE HOTEL & CONFERENCE CENTER" IN ALEXANDROUPOLIS, 300 BEDS CAPACITY.	2000	2.348.000,00

PETINIS GEORGE	MEP DESIGN AND SUPERVISION OF INSTALLATION FOR FACILITIES, "C" CLASS HOTEL, AT KAMARI IN. THIRA ISLAND.	1999	132.000,00
POSEIDON RESORT - ELINTOUR SA	MEP DESIGN AND SUPERVISION OF INSTALLATION FOR 60 NEW ROOMS WITH NEW POOL AND SURROUNDING AREA OF 5* HOTEL, IN LOUTRAKI.	1999	440.000,00
XENIA KASTANIAS	MEP DESIGN AND SUPERVISION OF INSTALLATION FOR HOTEL FACILITIES RENOVATION, IN KORINTHIA.	1999	117.000,00
GLAROS S.A	MEP DESIGN AND SUPERVISION OF INSTALLATION FOR FACILITIES RENOVATION FOR "A" CLASS HOTEL AT KAMARI IN. THIRA ISLAND.	1998	73.000,00
MINDRINOS MAPOYSI	MEP DESIGN AND SUPERVISION OF INSTALLATION FOR HOSTEL FACILITIES RENOVATION TO "A" CATEGORY, MAROYSI, ATHENS.	1998	117.000,00
SIRIGOS GEORGE	MEP DESIGN AND SUPERVISION OF INSTALLATION FOR GROUP OF 2 HOTELS WITH 140 BEDS IN PERISSA, THIRA ISLAND.	1998	528.000,00
COMMUNITY EKSOXORIOY MESSINIAS	MEP DESIGN AND SUPERVISION OF INSTALLATION FOR "C" CLASS HOTEL IN MESSINIA.	1998	294.000,00
E. BAMBAKOYSIS S.A.	MEP DESIGN AND SUPERVISION OF INSTALLATION FOR "C" CLASS HOTEL IN KAMARI, THIRA ISLAND.	1997	294.000,00
BROS KARAMOLEGOY	MEP DESIGN AND SUPERVISION OF INSTALLATION FOR "B" CLASS HOTEL, THIRA ISLAND.	1997	161.000,00
POSEIDON RESORT - ELINTOUR S.A.	MEP DESIGN AND SUPERVISION OF INSTALLATION FOR ROOM RENOVATION, GROUP RESIDENCE, 5* HOTEL, IN LOUTRAKI.	1996	250.000,00
ΣOYRAS IOANNIS	MEP DESIGN AND SUPERVISION OF INSTALLATION FOR FURNISHED APARTMENTS, FOLEGANDROS.	1996	59.000,00
POSEIDON RESORT - ELINTOUR S.A.	MEP DESIGN AND SUPERVISION OF INSTALLATION FOR EXTENSION LAUNDRY (WASHER 3.000KG/DAY), KORINTHOS.	1995	294.000,00
KAARE OFTEDAL	MEP DESIGN AND SUPERVISION OF INSTALLATION FOR FURNISHED APARTMENTS, NAXOS ISLAND.	1995	103.000,00
KAREGLAS-KALOGEITONAS	MEP DESIGN AND SUPERVISION OF INSTALLATION FOR CLASS HOTEL FACILITIES, NAXOS ISLAND.	1995	147.000,00
BROS VLACHOU	MEP DESIGN AND SUPERVISION OF INSTALLATION FOR "B" CLASS HOSTEL, THIRA ISLAND.	1995	59.000,00
POSEIDON RESORT - EAINTOYP A.E.	MEP DESIGN AND SUPERVISION OF INSTALLATION FOR TV IN 400 ROOMS, REFORM NETWORK TELEPHONE FROM CATEGORY 3 CATEGORY 5 FOR 5* HOTEL, LOUTRAKI.	1994	59.000,00
HRA S.A.	FIRE PROTECTION DESIGN OF HOTEL IN ATHENS.	1994	44.000,00
KOMIANIDI KATERINA	FIRE PROTECTION DESIGN FOR CAMPING IN N. KIFISSIA.	1994	29.000,00

POSEIDON RESORT - ELINTOUR S.A.	MEP DESIGN AND SUPERVISION OF INSTALLATION FOR RENOVATION CENTRAL RESTAURANT - TAVERN FOR 5* HOTEL, LOUTRAKI.	1993	103.000,00
POSEIDON RESORT - ELINTOUR S.A.	MEP DESIGN AND SUPERVISION OF INSTALLATION FOR OUTDOOR THEATRE WITH 800 SPECTATOR FOR 5* HOTEL, LOUTRAKI.	1992	44.000,00
DIMITROPOULOS PAN.	MEP DESIGN AND SUPERVISION OF INSTALLATION FOR FURNISHED ROOMS, PYLOS MESSINIAS.	1992	35.000,00
POSEIDON RESORT - ELINTOUR S.A.	MEP DESIGN AND SUPERVISION OF INSTALLATION FOR GYM OF 5* HOTEL, LOUTRAKI.	1991	21.000,00
POSEIDON RESORT - ELINTOUR S.A.	TECHNICAL CONSULTANT OF MEP INSTALLATIONS AND MAINTENANCE OF MECHANICAL EQUIPMENT IN 5* HOTEL "POSEIDON RESORT" AT LOUTRAKI KORINTHIAS, 850 BEDS CAPACITY.	1991-2002	
CHRISTINA NEVROY	MEP DESIGN AND SUPERVISION OF INSTALLATION FOR CLUSTER HOTELS AND CONVERSION OF TRADITIONAL BUILDINGS IN LUXURY HOTEL WITH 100 BEDS, HYDRA ISLAND.	1990-1993	176.000,00
AFR. CHACHADAKI- S. KOSTOMOIRIS	MEP DESIGN AND SUPERVISION OF INSTALLATION FOR HOSTEL, IN MYTILINI ISLAND.	1990	44.000,00
BROS KARALI SA	MEP DESIGN AND SUPERVISION OF INSTALLATION FOR B CLASS HOTEL FACILITIES WITH 52 BEDS IN SAINT GALINI, RETHYMNO, CRETE ISLAND.	1989-1991	59.000,00
PANDROSOS SA	MEP DESIGN AND SUPERVISION OF INSTALLATION FOR FACILITIES OF C CLASS HOTEL WITH 200 BEDS IN PAROS ISLAND.	1988-1990	132.000,00

OFFICES – SHOPS

ENTITY	PROJECT DESCRIPTION	PROJECT PERIOD	MEP BUDGET IN EURO
ANEE TEXNABA A.E.SPRING MARINE BULK S.A.SPRING MARINE MANAGMENT S.A	MEP DESIGN AND SUPERVISION FOR THE 3.300m ² OFFICE RENOVATION IN PALAIO FALIRO IN ATHENS	2017	1.500.000,00
FOREVER 21	MEP DESIGN AND SUPERVISION FOR “FOREVER 21” SHOP IN ATHENS	2017	400.000,00
PUBLIC	MEP DESIGN AND SUPERVISION FOR “PUBLIC” SHOP AT THE ATHENS INTERNATIONAL AIRPORT “ΕΛΕΥΘΕΡΙΟΣ ΒΕΝΙΖΕΛΟΣ”	2016	40.000,00
PARNONAS S.A	MEP DESIGN, SUPERVISION AND BIOCLIMATIC UPGRADING FOR THE CENTER OF CULTURAL, TOURIST AND ADMINISTRATIVE ACTIVITIES IN SPARTA	2016	600.000,00
IOM	MEP DESIGN AND SUPERVISION TO RENOVATE BUILDING DOM IN ATHENS	2016	380.000,00
HERMES GREECE S.A	MEP DESIGN AND SUPERVISION FOR THE HERMES RENOVATION AND EXTENSION EQUIPMENT IN THE CITY LINK TRADE CENTER AT ATHENS	2016	600.000,00
AL ALFIA -GALLER	MEP DESIGN AND SUPERVISION FOR THE GALLER STUDIO IN MALL QATAR, 180m ²	2015	120.000,00
EGYPTIAN EMBASSY	MEP DESIGN AND SUPERVISION OF THE EGYPTIAN EMBASSY IN ATHENS	2015	140.000,00
AL MANA, FLIK CINEMAS DOHA QATAR	MEP DESIGN AND INSPECTION OF 8 SCREEN MULTIPLEX CINEMAS IN AL MIRQAB MALL , 1000 SEATS	2014	2.000.000,00
AL MANA, FLIK CINEMAS DOHA QATAR	MEP DESIGN AND INSPECTION OF 4 SCREEN MULTIPLEX CINEMAS IN LAGOONA MALL	2014	800.000,00
SKLAVENITIS S.A	MEP DESIGN AND SUPERVISION FOR THE RENOVATION OF THE MAIN WAREHOUSES BUILDINGS AND REFORM TO OFFICE BUILDING, 10.000M ²	2014	4.000.000,00
AL MEERA, DOHA QATAR	MEP DESIGN AND INSPECTION OF AL MEERA SUPER MARKET AND MALL, HAZM AL MARKIHYA BRANCH 1.200M ²	2013 -2014	1.000.000,00
QIS, DOHA QATAR	MEP DESIGN AND INSPECTION OF QIS HEAD QUARTERS AT 41th FLOOR OF PALM TOWERS, 1.200M ²	2012-2013	750.000,00
CANDA PHARMACEUTICALS A.E.	MEP DESIGN OF INSTALLATION FOR PLANT RENOVATION FOR OFFICE	2011	250.000,00
BELLA VISTA DEVELOPMENT SA	MEP DESIGN OF INSTALLATION FOR MALL IN XIOS	2011-2012	500.000,00
CYTA A.E.	MEP DESIGN OF INSTALLATION FOR FACILITIES IN STORE IN ATHENS CYTA, N. IONIA AND KORUDALLOS	2011	30.000,00

FLASH RADIO	MEP DESIGN AND INSPECTION FOR THE HEADQUARTERS AND STUDIOS OF FLASH RADIO BROADCASTING COMPANY 1500 M ²	2010	370.0000
NEP EDITIONS SA	MEP DESIGN OF INSTALLATION FOR FACILITIES TO REFURBISH OFFICES IN THE BUILDING OF PUBLICATIONS	2010	800.000,00
BOEHRINGER INGELHEIM	MEP DESIGN OF INSTALLATION FOR THE OFFICE OF BOEHRINGER INGELHEIM	2010	1.000.000,00
SARNITEC SA	MEP DESIGN OF INSTALLATION FOR FACILITIES FOR THE RENOVATION OF BUILDINGS 48,57,56 OLYMPIC AIR IN AIA NATIONAL AIRPORT	2010	1.000.000,00
GROUP 4 SA	MEP DESIGN OF INSTALLATION FOR FACILITIES FOR LISTED BUILDING RENOVATION TO HOUSING OFFICES OF THE COMPANY GROUP 4	2010	1.500.000,00
BROS CHELLA	MEP DESIGN OF INSTALLATION FOR CONSTRUCTION TWO-STOREY BUILDING'S OFFICES DUE TO DESTRUCTION OF FIRE IN AGIA PARASKEUH	2009	600.000,00
SARNITEC SA	MEP DESIGN OF INSTALLATION FOR THE OFFICE OF OLYMPIC AIR IN VARI KOROPIOU	2009	600.000,00
DUTY FREE SHOPS SA	MEP INSTALLATIONS DESIGN FOR DUTY FREE SHOPS RENOVATION-EXTENSION IN 'NIKH' BORDER	2009	500.000,00
S / O THEKAT ATE NIRIKOS TECHNICAL SA	MEP DESIGN OF INSTALLATION TO CHANGE THE OF USE OF BUILDING IN VOLOS, PREFECTURE MAGNISIAS	2009	1.000.000,00
AGRICULTURAL BANK OF GREECE	MEP DESIGN OF INSTALLATION RECOVERY FACILITY FOR BUILDING COMPLEX OF AGRICULTURAL BANK IN PANEPISTIMIOY 23	2009	2.700.000,00
PENTHEROUDAKIS	MEP INSTALLATIONS DESIGN AND SUPERVISION FOR JEWELRY "PENTHEROUDAKIS" IN "GOLDEN HALL" MALL IN ATHENS	2009	150.000,00
MARFIN SA	MEP DESIGN OF INSTALLATION FOR RENOVATION MARFIN LEASING OFFICE IN KIFISIAS 68, IN ATHENS	2008	280.000,00
HENKEL SA	SUPERVISION AND PROJECT MANAGEMENT FOR OFFICE RENOVATION AT HELKEN - RILKEN IN ATHENS	2008	1.000.000,00
MARFIN SA	MEP DESIGN OF INSTALLATION TO RENOVATE FOUR STOREY BUILDING STOCK MARKET COMPANY OFFICES IN AIGIALEIAS AND PARADISOU IN ATHENS	2007	1.300.000,00
MARFIN SA	MEP DESING OF INSTALLATION TO RENOVATE TWO FLOORS BUILDING IN AIGIALEIAS GYZI IN ATHENS	2007	350.000,00
MARFIN SA	MEP DESIGH OF INSTALLATION FOR HEADQUARTERS OF MARFIN GROUP IN N. ERITREA THISEOS 67	2007	2.500.000,00
DUTY FREE SHOPS SA.	MEP INSTALLATIONS DESIGN AND SUPERVISION FOR DUTY FREE SHOPS RENOVATION-EXTENSION IN 'PROMACHONAS' BORDER	2007	450.000,00
POSTAL SAVINGS BANK OF GREECE	MEP DESIGN OF INSTALLATION FOR UTILIZATION AND REDESIGN PROPERTY IN POSTAL SAVINGS IN RHODES	2007	400.000,00
POSTAL SAVINGS BANK OF GREECE	MEP DESIGN OF INSTALLATION FOR REDESIGN MAIN POSTAL SAVINGS OFFICES IN THESSALONIKI	2007	200.000,00

MATALA-JAFFA	MEP DESIGN AND SUPERVISION OF INSTALLATION CONFIGURATION FOR OFFICE SPACE COMPANY IN MATALA – JAFFA AGIOS STEFANOS ATTICA	2007	300.000,00
MUNICIPALITY AROANIA PREFECTURE ACHAIA	MEP DESIGN OF INSTALLATIONS FOR THE NEW CITY HALL BUILDING IN AROANIA MUNICIPALITY AND LANDSCAPING MULTIPURPOSE SPACES	2007	360.000,00
DATA COMMUNICATION	MEP DESIGN AND SUPERVISION OF NEW BUILDING INSTALLATION OF DATA COMMUNICATION COMPANY IN MELISSIA ATTICA	2007	650.000,00
GREEK WATER COMPANY	MEP DESIGN OF INSTALLATION TO RENOVATE OFFICE (100m2) AND STORE (400m2) FOR GREEK WATER COMPANY AT EXHIBITION CENTER OF ATHENS	2007	180.000,00
F. IOANNIDES	MEP DESIGN AND SUPERVISION FOR BUILDING (SHOPS, OFFICES) INSTALLATION	2006	300.000,00
HYPERION SA	MEP DESIGN OF INSTALLATION FOR THE RESTAURANT CAFÉ AVENUE IN GLIFADA	2006	500.000,00
SFAKIANAKIS SA	MEP DESIGN AND SUPERVISION OF INSTALLATION FOR THE CAR EXHIBITION SPACE BUILDING IN MAROUSI	2006	500.000,00
AMERICAN EXPRESS	MEP DESIGN OF SUPERVISION FOR OFFICES INSTALLATION IN PRIVATE BANKING OF AMERICAN EXPRESS	2006	100.000,00
BIODYNAMICS	MEP DESIGN AND SUPERVISION OF INSTALLATION FOR A NEW BUILDING OF COMPANY BIODYNAMICS S.A. IN L. KATECHAKI	2006	650.000,00
CISCO SYSTEMS	MEP DESIGN AND SUPERVISION OF INSTALLATION FOR SHAPING OFFICES AT CISCO SYSTEMS	2006	100.000,00
VOGIATZOGLOU SYSTEMS	MEP DESIGN AND SUPERVISION FOR STORE INSTALLATION IN ORGANIZER STORE IN RENTI	2005	200.000,00
CYPRUS MINISTRY OF COMMUNICATIONS AND PROJECTS	MEP DESIGN AND SUPERVISION FOR REPUBLIC OF CYPRUS AMBASSADORS HOUSE INSTALLATIONS	2005	800.000,00
MULTIRAMA	MEP INSTALLATIONS DESIGN AND SUPERVISION FOR MULTIRAMA SHOP IN “THE MALL” ATHENS	2005	250.000,00
MULTIRAMA	MEP INSTALLATIONS DESIGN AND SUPERVISION FOR MULTIRAMA EXTREME STORE IN STOURNARI STREET	2005	350.000,00
GERMANOS	MEP INSTALLATIONS DESIGN AND SUPERVISION FOR GERMANOS SHOP IN KASSAVETI STREET IN KIFISIA	2005	400.000,00
GERMANOS	MEP INSTALLATIONS DESIGN AND SUPERVISION FOR GERMANOS STORE IN “MEDITERRANEAN COSMOS” MALL IN THESSALONIKI	2005	150.000,00
MULTIRAMA	MEP INSTALLATIONS DESIGN AND SUPERVISION FOR 2000 m2 PUBLIC BRANCHES IN “MEDITERRANEAN COSMOS” MALL IN THESSALONIKI	2005	1.000.000,00
GERLING	MEP DESIGN AND INSTALLATION FOR THE RECONSTRUCTION FLOORS OF KANTOR SA BUILDING	2005	150.000,00
I. DOURAMPEIS & SONS OE.	MEP DESIGN AND SUPERVISION FOR FACILITIES RENOVATION IN RESTAURANT	2005	100.000,00

VOGIATZOGLOU	MEP DESIGN FOR INSTALLATIONS TO «ORGANIZER STORES» IN RED STORE	2005	250.000,00
BERGMAN KORD	MEP DESIGN AND INSTALLATION FOR OFFICE BUILDING RENOVATION	2005	420.000,00
PUBLIC	MEP INSTALLATIONS DESIGN AND SUPERVISION FOR "MEGARO PALLH" RESTORATION IN SYNTAGMA SQUARE	2004	2.200.000,00
BETA STOCK COMPANY	MEP DESIGN AND INSTALLATION FOR THE RENOVATION OF A BUILDING WITH OFFICES IN IN ALEXANDRA L. STREET	2004	150.000,00
AUTO POINT SA	MEP DESIGN OF INSTALLATION FOR AUTOPOINT SA OFFICES	2004	100.000,00
OTE SA	MEP INSTALLATIONS DESIGN FOR 100 RETAIL OTE SHOPS FOR COSMOTE IN GREECE	2004-2005	5.000.000,00
KANTOR SA.	MEP DESIGN AND SUPERVISION FOR INSTALLATION OF BUILDING OFFICES FOR KANTOR SA IN OMHROU AND VISSARIONOS STREET	2004	800.000,00
AUTO POINT SA.	MEP DESIGN AND SUPERVISION TO RENOVATE VOLVO'S TWO STORES	2004	250.000,00
EIRINIKH ATTEE	MEP DESIGN OF MULTISTOREY BUILDING INSTALLATION IN PIRAEUS	2004	800.000,00
ASTRON CHEMICALS SA	MEP DESIGN OF NEW BUILDING INSTALATIONS IN ASPROPYRGOS	2004	300.000,00
MINISTRY OF AGRICULTURE	MEP DESIGN FOR GERMPLASM BANK (PLANT) COMPANY IN THERMI IN THESSALONIKI	2003-2004	200.000,00
KAstri SA	MEP DESIGN FOR NEW FACTORY INSTALLATIONS IN PARKETA IN ELEUSINA	2003-2004	650.000,00
TEKNO SA	MEP DESIGN OF NEW THREE OFFICE BUILDING INSTALLATIONS IN XALANDRI	2003	200.000,00
STRUCTURAL CRETE SA	MEP DESIGN OF POLICE STATION BUILDING INSTALLATIONS IN IRAKLEIO	2003	1.800.000,00
PREFECTURE CHIOY D.T.Y.	MEP DESIGN OF BUILDING INSTALLATIONS IN CHIOS ISLAND	2003	1.500.000,00
SCHOOL OF FINE ARTS	MEP DESIGN OF INSTALLATION FOR ARTISTIC STATION IN MONODENDRI IOANNINON	2003-2004	250.000,00
KED SA	MEP DESIGN OF INSTALLATIONS FOR POLICE DIVISION IN PATRA ACHAIA	2003	2.000.000,00
CASH DEPOSITS AND LOANS	MEP DESIGN FOR THE RENOVATION AND MODERNIZATION OF THE GROUND FLOOR OF THE BUILDING OF FUND DEPOSITS AND LOANS IN ACADEMY 40 STREET	2002	300,000,00
MINISTRY OF PUBLIC ORDER	PRE MEP DESIGN FOR POLICE STATION INSTALLATIONS IN DIVISION OF KOZANI	2002	1.000.000,00

MINISTRY OF PUBLIC ORDER	PRE MEP DESIGN FOR POLICE STATION INSTALLATIONS IN DIVISION OF MAGNISIA	2002	1.000.000,00
LITO SA	MEP DESIGN OF SUPERVISION FOR INSTALLATION TO RENOVATE THREE BRANCHES SHOPS OF "LITO"	2002	300.000,00
IAKOVOY SA LAMPOUSA SA	MEP DESIGN AND SUPERVISION FOR NEW BUILDING STOREY INSTALLATIONS	2002	500.00,00
BRITISH COUNCIL	MEP DESIGN OF SUPERVISION FOR INSTALLATION FOR BUILDING RENOVATION OF BRITISH COUNCIL IN KOLONAKI, ATHENS	2001-2002	600.000,00
EUREKA HELLAS SA	MEP DESIGN AND SUPERVISION FOR INSTALLATIONS OF OFFICES IN LYKOVRYSI ATTICA	2001-2002	2.000.000,00
EKEMK SA	MEP DESIGN AND SUPERVISION FOR INSTALLATIONS OF OFFICES IN XALANDRI	2001	80.000,00
SONAK SA.	MEP DESIGN OF INSTALLATION FOR NEW OFFICES IN MARKOPOULO	2000	59.000,00
B. GIANNOPOULOS SA	MEP DESIGN FOR 2 FLOOR'S BUILDING OFFICES INSTALLATIONS WITH TWO UNDERGROUND GARAGE ATTICA	2000-2001	352.000,00
DOMOKAT SA	MEP DESIGN OF INSTALLATION FOR NEW OFFICE BUILDING COMPANY IN 3 FLOORS IN SPATA	2000-2001	470.000,00
MUNICIPALITY KAMATEROY	MEP DESIGN OF INSTALLATION FOR NEW BUILDING TOWN HALL	2000-2001	675.000,00
G. KOULOURIS SA	MEP DESIGN OF OFFICES AND SHOPS INSTALLATION IN GLYKA NERA	2000	528.000,00
MINISTRY OF JUSTICE	MEP DESIGN OF INSTALLATION FOR COURTHOUSE IN TRIKALA	2000	2.935.000,00
GENERAL SECRETARIAT FOR RESEARCH AND TECHNOLOGY	MEP DESIGN OF INSTALLATION FOR THE FOUNDATION OF RESEARCH AND TECHNOLOGY (FORTH) / IMBB EXPERIMENT IN-BUILDING-KING VILLAGE BOYTON IN HERAKLION CRETE	2000	200.000,00
MINISTRY OF AGRICULTURE	MEP DESIGN AND INSTALLATION FOR GENETIC IMPROVEMENT CENTER FOR ANIMALS IN IOANNINA (K.G.V.Z.)	1999-2001	550.000,00
RETZEPOGLOU-ZAFEIRATOS	MEP DESIGN OF INSTALLATIONS FOR OFFICES IN PALLINI	1999	117.000,00
SHELMAN SA	MEP DESIGN AND INSTALLATION IN BUILDING OFFICES IN KOMOTINI	1999	176.000,00
J. PAPANIKOLAS - D.I.G. PAPANIKOLA Co	MEP DESIGN OF 4 STOREY OFFICE BUILDING AND SHOP INSTALLATIONS IN CHAIDARI	1999	440.000,00
STAMPOULIS NICK	MEP DESIGN OF INSTALLATION FOR SHOPPING CENTER IN GLYFADA IOAN. METAXA STREET	1997	235.000,00
NOMIKOY EIRHNH	MEP DESIGN OF RETAIL SHOPS INSTALLATIONS IN KO ISLAND	1997	103.000,00
STAMPOULIS-ABAZI	MEP DESIGN AND INSTALLATION FOR 20 STORIES BRANCH OFFICE BUILDING-JOHN METAXA STREET IN GLYFADA	1997	176.000,00

ANGELOPOULOU MARIA		MEP DESIGN AND SUPERVISION FOR NEW INSTALLATION 40 STOREYS OFFICE BUILDING IN P.FALIRO AT POSEIDONOS & GIANNAROU STREET	1994-1995	103.000,00
SANCTUARY "METAMORPHOSIS SAVIOR"	RETREAT OF	MEP DESIGN OF SUPERVISION OF INSTALLATION FOR 50 STOREYS OFFICES BUILDING IN P.FALIRO	1994-1995	117.000,00
BROS SA FILI		MEP DESIGN AND SUPERVISION OF MARKETING CAR, OFFICE AND BASEMENT GARAGE INSTALLATIONS IN AK. PLATONOS STREET	1993-1994	147.000,00
KASIDOPOULOS GEORGIOS		MEP DESIGN AND SUPERVISION FOR INSTALLATIONS OF OFFICES AND SHOPS IN 160Km. NAT. ROAD ATHENS – LAMIA	1992-1994	147.000,00
G.N.C. CAR Ltd.		MEP DESIGN AND SUPERVISION FOR COMPANY OFFICE INSTALLATIONS IN ATHENS	1992	44.000,00
K.L.M. AIRLINES		AIR CONDITIONING DESIGN AND SUPERVISION OF INSTALLATION FOR THE COMPANY'S HEADQUARTERS OFFICES IN L. VOULIAGMENIS	1992	18.000,00
B. ALIZIOTIS & Co.		MEP DESIGN AND SUPERVISION OF INSTALLATIONS IN MALL CENTER WITH TOTAL SURFACE 3.100 m2 ON AVE. MESOGION	1991-1994	147.000,00
PAPANIKOLAS VASSILIS		MEP DESIGN AND SUPERVISION OF INSTALLATION FOR MALL IN THE ROUTE TO FLOROU STREET IN N. FILOTHEI	1991-1992	44.000,00
BROSS PAPANIKOLA SA		MEP DESIGN AND SUPERVISION OF COMPANY'S CENTRAL OFFICE INSTALLATIONS IN L. PENTELIS 39 IN ATHENS	1989-1990	73.000,00
PAPARIS SA		MEP DESIGN OF SUPERVISION FOR INSTALLATION OF CENTRAL OFFICE AND STORE COMPANY IN N. IONIA ATTICA WITH SURFACE 2.500 m2	1989-1992	59.000,00
PAPANIKOLAS KON / NOS		MEP DESIGN OF INSTALLATION FOR MALL IN PEANIA	1987-1988	23.000,00
PAPANIKOLAS KON / NOS		MEP DESIGN AND INSTALLATION FOR MALL IN AVE. MARATHONOS IN PALLINI	1987-1988	35.000,00

MUSEUMS – ARCHAEOLOGICAL SITES-MULTI PURPOSE SPACES, AUDITORIUMS

ENTITY	PROJECT DESCRIPTION	PROJECT PERIOD	MEP BUDGET IN EURO
THEODORE ZOUMPOLAKIS & CO	MEP DESIGN OF INSTALLATIONS FOR EXHIBITION AREA WITH OFFICES	2018	200.000,00
MINISTRY OF CULTURE AND SPORT 25 TH BYZANTINE ANTIQUITIES	MEP DESIGN OF INSTALLATIONS FOR FIXATION-RECOVERY – PROMOTION- REUSAGE OF FORTRESS BOURTZI	2013-2014	1.400.000
MINISTRY OF CULTURE IX' DEPARTMENT OF PREHISTORIC AND CLASSICAL ANTIQUITIES OF THIVA	MEP DESIGN OF INSTALLATIONS FOR THE SUSTAINED ANCIENT REMAINS IN BASEMENT AND THE ATRIUM OF THE NEW MUSEUM THIVON	2010	150.000,00
MINISTRY OF CULTURE	MEP DESIGN OF INSTALLATIONS FOR THE GARDEN CONFIGURATION IN HERAKLION ARCHAEOLOGICAL MUSEUM	2010	60.000,00
NATIONAL MUSEUM OF CONTEMPORARY ART	MEP DESIGN OF INSTALLATIONS FOR THE CONVERSION OF SPACES OF NATIONAL CONSERVATORY FOR HOUSING REPORTS OF EMST	2009	300.000,00
PIRAEUS BANK SA	MEP DESIGN OF INSTALLATIONS FOR OUTDOOR YDROMOVEMENT MUSEUM IN DIMITSANA	2009	200.000,00
PR EFACTURE PIRAEUS	MEP DESIGN OF INSTALLATIONS FOR THE UPGRADE OF SURROUNDING AREA AND PROMOTION LIGHTING OF THE TEMPLES AFAIAS AND ELLANIOU DIOS	2006	350.000,00
ANAPOLIS K. BIZANIS DEVELOPMENT AND CULTURAL ACTIVITIES EU	MEP DESIGN OF INSTALLATIONS FOR THE CONVERSION OF OLD MILLS INTO MULTIFUNCTIONAL SPACE MUSEUM EVENTS AND CULTURE	2006	100.000,00
MUNICIPALITY TRIKOLONON	MEP DESIGN OF INSTALLATIONS FOR THE EXHIBITION SPACE IN PRIMARY SCHOOL IN VILLAGE PSARIOY	2006	180.000,00
MUNICIPALITY FALANTHOU	MEP DESIGN OF INSTALLATIONS FOR THE REPAIR AND ADAPTATION TO MUSEOLOGY PROGRAMME PRISTIRIOU BUILDING FOREST MUSEUM IN CHRYSOVITSI ARKADIAS	2006	70.000,00
CULTURAL FOUNDATION GROUP PIRAEUS	MEP DESIGN OF INSTALLATIONS FOR THE RESTORATION OF PLINTHOLERAMOPOLIS MUSEUM BUILDINGS IN COMPLEX TSALAPATA IN VOLOS	2005	350.000,00
MUNICIPALITY NEAS MAKRIS	MEP DESIGN OF INSTALLATIONS FOR THE FRONT BUILDING OF NEW ELEMENTARY SCHOOL OF NEA MAKRIS	2004	100.000,00
NATIONAL MUSEUM OF CONTEMPORARY ART	MEP DESIGN OF INSTALLATIONS FOR THE NATIONAL MUSEUM OF CONTEMPORARY ART IN OLD BUILDING FIX	2004-2006	11.000.000,00
MINISTRY OF CULTURE	FINAL MEP DESIGN OF INSTALLATIONS FOR THE PROCUREMENT OF MUSEUM IN CHANIA	2004	2.000.000,00

PR EFECTURE CHIOU	MEP DESIGN OF INSTALLATIONS FOR RESTORATION OF CASTLE- TOWER PITIOUS CHIOU	2003-2004	150.000,00
NATIONAL FOUNDATION EVANGELISTRIAS VIRGIN TINOU	MEP DESIGN AND SUPERVISION OF INSTALLATIONS FOR RENOVATION OFFICES SPACES AND MUSEUM AND SUPPORT SPACES OF THE FOUNDATION	2003-2004	1.800.000,00
EAXA SA	SUPERVISION OF INSTALLATIONS FOR THE UNIFICATION OF ARCHAEOLOGICAL SITES ROAD KOLOKOTRONI ATHENS	2003-2004	50.000,00
EAXA SA	MEP DESIGN OF INSTALLATIONS FOR THE UNIFICATION OF ARCHAEOLOGICAL SITES ROAD ERMOU	2003-2004	150.000,00
DE.A.E	MEP DESIGN OF INSTALLATIONS FOR THE INDUSTRIAL MUSEUM ERMOUPOLIS SYROU	2003	500.000,00
OPEP SA	MEP DESIGN OF INSTALLATIONS FOR TICKETS SHOP IN ARCHAEOLOGICAL SITE N. DILOU	2003	100.000,00
PIRAEUS BANK SA	MEP DESIGN OF INSTALLATIONS FOR THE RENOVATION OF THE MANSION KOYRTIDH IN SOUFLI AND CONVERSION TO SILK MUSEUM	2003	300.000,00
COMMISSION PROMOTION & CONSOLIDATION OF ARCHAEOLOGICAL SITES MARATHON	MEP DESIGN OF INSTALLATIONS FOR RENOVATION OF MUSEUM AND SURROUNDINGS	2002-2003	250.000,00
MUNICIPALITY MILEON PILIOU	MEP DESIGN AND SUPERVISION OF INSTALLATIONS FOR MUSEUM VYZITSAS	2001-2002	300.000,00
YP.PO	FINAL MEP DESIGN OF INSTALLATIONS OF ARCHAEOLOGICAL MUSEUM ILIDAS FOR PARTICIPATION IN CONTEST	2001	700.000,00
CULTURAL & TECHNOLOGICAL INSTITUTE ETBA	MEP DESIGN OF INSTALLATIONS FOR MUSEUM MARMAROTECHNIAS TINOU	2000	191.000,00
MUNICIPALITY KALAMATAS	MEP DESIGN OF INSTALLATIONS FOR THE RENEWAL OF HISTORICAL CENTRE OF KALAMATAS	1998	196.000,00
MINISTRY OF CULTURE T.A.P.A	MEP DESIGN OF INSTALLATIONS FOR THE TOTAL PROMOTION OF AKROPOLEOS OF THE CASTLE IN SIFNOS	1996	169.000,00
MINISTRY OF CULTURE	FINAL MEP DESIGN OF INSTALLATIONS FOR CONVERSION OF OLD MUNICIPAL MARKET OF KALAMATAS IN MUSEUM FOR PARTICIPATION IN CONTEST	1996	437.000,00
MINISTRY OF CULTURE	MEP DESIGN AND SUPERVISION OF INSTALLATIONS FOR BUILDING CONVERSION ON ROADS PIRAEUS 83 & SALAMINOS, IN MUSEUM ARCHIVES G. PAPANDREOU	1994	44.000,00
MUNICIPALITY ILIOUPOLIS	MEP DESIGN OF INSTALLATIONS BUILDING FOR OFFICES AND SHOWROOMS NATIONAL RESISTANCE	1994	205.000,00

BANKS - STOCK EXCHANGE COMPANY

ENTITY	PROJECT DESCRIPTION	PROJECT PERIOD	MEP BUDGET IN EURO
EMPORIKI BANK SA	MEP DESIGN FOR PLANT RENOVATION IN BANKING BRANCH IN ARGOS	2011 - 2012	80.000,00
EMPORIKI BANK SA	MEP DESIGN FOR PLANT RENOVATION ON BANKING BRANCH OF ROADS AND THEMISTOKLEOUS UNIVERSITY IN ATHENS	2011	60.000,00
POSTAL SAVINGS BANK SA	MEP DESIGN FOR PLANT RENOVATION FOR THE MAIN BUILDING OF ATHENS TT PESMAZOGLOU	2010	300.000,00
ABM Ltd.	MEP DESIGN FOR PLANT RENOVATION BANKING BRANCH TT IN KALLITHEA	2010	50.000,00
EMPORIKI BANK SA	MEP DESIGN FOR INSTALLATION FOR THE RENOVATION OF BANKING BRANCH IN PASALIMANI	2010	160.000,00
EMPORIKI BANK SA	MEP DESIGN INSTALLATION FOR THE RENOVATION OF BANKING BRANCH IN PATRA	2010	150.000,00
EMPORIKI BANK SA	MEP DESIGN OF INSTALLATION FOR THE RENOVATION OF BANKING BRANCH IN NAFPAKTOS	2010	140.000,00
EMPORIKI BANK SA	MEP DESIGN OF INSTALLATION FOR THE RENOVATION OF BANKING BRANCH IN METAKSOURGIO	2010	160.000,00
AGRICULTURAL BANK OF GREECE	MEP DESIGN OF INSTALLATION FOR RECOVERY FACILITY BUILDING COMPLEX OF ATE IN PANEPISTIMIOY 23	2009	2.700.000,00
MARFIN SA	MEP DESIGN OF INSTALLATION FOR RENOVATION MARFIN LEASING OFFICE IN KIFISIAS 68 IN ATHENS	2008	280.000,00
MARFIN SA	MEP DESIGN OF INSTALLATION FOR RENOVATION OF FOUR STOREY STOCK MARKET COMPANY BUILDING IN AIGIALEIAS AND PARADISE, IN ATHENS	2007	1.300.000,00
MARFIN SA	MEP DESIGN OF INSTALLATION FOR RENOVATION TWO FLOORS BUILDING IN AIGIALEIAS GYZI, IN ATHENS	2007	350.000,00
MARFIN SA	MEP DESIGN OF INSTALLATION FOR RENOVATION HEAD OFFICE MARFIN GROUP IN N. ERITREA THISEOS 67	2007	2.500.000,00
EKTER SA	MEP DESIGN OF INSTALLATION FOR PLANT RENOVATION FOR NATIONAL BRANCH BANK IN PATRON	2002	200.000,00
NATIONAL BANK OF GREECE	MEP DESIGN OF INSTALLATION FOR BRANCH OF NATIONAL BANK OF GREECE IN CRETE	2002	300.000,00
TELESIS INVESTMENT BANK SA	MEP DESIGN AND SUPERVISION OF INSTALLATION OF NEW BRANCH IN THESSALONIKI	2000	205.000,00
TELESIS A.X.E.	MEP DESIGN AND SUPERVISION OF INSTALLATION OF NEW OFFICE IN THESSALONIKI	2000	117.000,00

TELESIS DIRECT	MEP DESIGN AND SUPERVISION OF INSTALLATION OF OFFICES IN VALAORITOU ROUTE 18 IN ATHENS	1999	88.000,00
DIAS A.E.E.X.	MEP DESIGN AND SUPERVISION OF NEW OFFICE OF THE COMPANY IN BUCHAREST ROUTE 6	1999	88.000,00
ETBA SA	MEP DESIGN FOR LISTED BUILDING AND CONVERSION INTO CENTRAL BANK BRANCH ETBA BANK IN PATRON AND TWO FLOORS OFFICE	1999	470.000,00
TELESIS A.X.E.	MEP DESIGN FOR PLANT EXTENSION OFFICE IN 2nd AND 5th FLOORS	1998-1999	323.000,00
PROFIT HERMES AXE	MEP DESIGN AND SUPERVISION FOR PLANT RENOVATION AND EXTENSION OFFICE.	1998-1999	264.000,00
GENERAL BANK	TECHNICAL CONSULTING COMPANY OF CONSTRUCTION COMPANY ABM Ltd. FOR RENOVATION IN STORES OMONOIAS, PAGKRATIOU, KOROPIOU AND PURGOU ILIAS	1995-1997	470.000,00
PROFIT HERMES AXE	MEP DESIGN AND SUPERVISION FOR INSTALLATION TO RENOVATE OFFICE ON 5TH FLOOR	1996	88.000,00
TELESIS A.X.E.	MEP DESIGN AND SUPERVISION FOR PLANT RENOVATION 4TH FLOOR	1995	117.000,00

EDUCATION: UNIVERSITIES-SCHOOLS-KINDERGARTEN- NURSERYS

ENTITY	PROJECT DESCRIPTION	PROJECT PERIOD	MEP BUDGET IN EURO
MUNICIPALITY LIOSIA, ATHENS, GREECE	MEP DESIGN AND SUPERVISION OF INSTALLATION FOR NURSERY STATION SAINT NICHOLAS IN ANO LIOSIA, ATHENS.	2008-2011	400.000,00
KETEP ATHENS, GREECE	MEP DESIGN AND SUPERVISION OF INSTALLATION FOR THE BUILDING OF CULTURAL & EDUCATIONAL INSTITUTE OF TECHNOLOGY / IPET, ATHENS, GREECE.	2005	800.000,00
MUNICIPALITY MEGARON ATHENS, GREECE	MEP DESIGN AND SUPERVISION OF INSTALLATION FOR THE PRIMARY SCHOOL 9th MEGARON, GREECE.	2004	180.000,00
NEW MUNICIPALITY MAKRHS, ATTIKH	MEP DESIGN AND SUPERVISION OF INSTALLATION FOR THE FRONT BUILDING PRIMARY SCHOOL N. MAKRHS, ATTIKH.	2004	90.000,00
UNIVERSITY OF THESSALY VOLO, GREECE	MEP DESIGN AND SUPERVISION OF INSTALLATION FOR LISTED BUILDING "TSIRIKIS" RENOVATION IN VOLO, GREECE.	2003-2004	650.000,00
DEMOCRITUS UNIVERSITY ATHENS, GREECE	FINAL MEP DESIGN AND SUPERVISION OF INSTALLATION FOR THE CONSTRUCTION OF BUILDINGS DEPARTMENT OF ELECTRICAL AND COMPUTER ENGINEERING OF DUTH TO PARTICIPATE IN THE COMPETITION, ATHENS, GREECE.	2002-2003	1.800.000,00
GENERAL SECRETARIAT RESEARCH AND TECHNOLOGY HERAKLION, CRETE	MEP DESIGN AND SUPERVISION OF INSTALLATION FOR THE FOUNDATION OF RESEARCH AND TECHNOLOGY (FORTH) / IMBB EXPERIMENT IN-BUILDING-KING VILLAGE IN HERAKLION, CRETE ISLAND.	2000	200.000,00
MINISTRY OF AGRICULTURE IOANNINA	MEP DESIGN AND SUPERVISION OF INSTALLATION FOR GENETIC IMPROVEMENT CENTER IN ANIMALS IOANNINA (K.G.V.Z.), GREECE.	1999-2001	550.000,00
GENERAL SECRETARIAT FOR RESEARCH & TECHNOLOGY	MEP DESIGN AND SUPERVISION OF INSTALLATION FOR RESEARCH DIVISION "ITHAVIC" IN HERAKLION, CRETE ISLAND.	1999	1.236.000,00
UNIVERSITY OF AEGEAN	MEP DESIGN AND SUPERVISION OF INSTALLATION FOR FOUR NEW BUILDING WITH THE SYSTEM OF PREFABRICATION, TOTAL SURFACE 14,000m2, IN ATHENS, GREECE.	1999	2.641.000,00
MUNICIPALITY VATHEOS SAMOY	MEP DESIGN AND SUPERVISION OF INSTALLATION FOR NURSERY AND CRECHE FACILITIES IN SAMOS ISLAND, GREECE.	1999	59.000,00
ZAFEIRATOS SABBAS	MEP DESIGN AND SUPERVISION OF INSTALLATION FOR ELEMENTARY SCHOOL FACILITIES, IN ASTAKOS.	1999	73.000,00
MUNICIPALITY NIKEA	MEP DESIGN AND SUPERVISION OF INSTALLATION FOR 5th NIKEA'S HIGH SCHOOL, ATHENS.	1999	176.000,00
MUNICIPALITY KORYDALLOY	MEP DESIGN AND SUPERVISION OF INSTALLATION FOR 19th ELEMENTARY SCHOOL IN KORYDALLOS, ATHENS.	1998-1999	205.000,00
THE DODECANESE PREFECTURE	MEP DESIGN AND SUPERVISION OF INSTALLATION FOR STUDY IN A WING OF THE 6th PRIMARY SCHOOL TOWN IN RODOS ISLAND, GREECE.	1998	470.000,00

HERAKLIO PREFECTURE	MEP DESIGN AND SUPERVISION OF INSTALLATION FOR 1st KINDERGARTEN AT KROUSONA IN HERAKLEIO, CRETE ISLAND.	1997-1998	186.000,00
PREFECTURE OF SAMOS	MEP DESIGN AND SUPERVISION OF HIGH SCHOOL AT FOURNOUS IN IKARIA ISLAND, GREECE.	1997-1998	150.000,00
PREFECTURE OF EYVOIAS Δ.Τ.Υ.	MEP DESIGN AND SUPERVISION OF INSTALLATION AT THE 3rd ELEMENTARY SCHOOL IN CHALKIDA, GREECE.	1997	132.000,00
T.E.I. ATHENS, GREECE	MEP DESIGN AND SUPERVISION OF INSTALLATION FOR PLANT ADDITION 2 FLOOR IN ATHENS, GREECE.	1996	176.000,00
T.E.I HERAKLION, CRETE	MEP DESIGN AND SUPERVISION OF INSTALLATION FOR AMPHITHEATER AT T.E.I OF HERAKLION, CRETE ISLAND.	1996	332.000,00
THE DODECANESE PREFECTURE, ADDRESSES AND TECHNICAL INFRASTRUCTURE PROJECTS	MEP DESIGN AND SUPERVISION OF INSTALLATION OF INSTALLATION FOR A DEPARTMENT OF HIGH SCHOOL IN KALYVIA, ATHENS, GREECE.	1996	293.000,00
THE DODECANESE PREFECTURE	MEP DESIGN AND SUPERVISION OF INSTALLATION FOR TEL KALYMNOY, IN KALYMNOS ISLAND, GREECE.	1996	264.000,00
UNIVERSITY OF AEGEAN	MEP DESIGN AND SUPERVISION OF INSTALLATION FOR CONVERSION OF FORMER XENIA MYTILINIS IN UNIVERSITY BUILDING FOR PARTICIPATION IN THE COMPETITION, GREECE.	1996	1.027.000,00
NOMARCHIA WEST ATTICA	MEP DESIGN AND SUPERVISION OF INSTALLATION FOR KINDERGARTEN STATION AT AG. VARVARA, ATHENS, GREECE.	1994-1995	44.000,00
ELLINAKI - GIOUROUKOY	MEP DESIGN AND SUPERVISION OF INSTALLATION FOR KINDERGARTEN STATION IN AG.PARASKEVI, ATHENS, GREECE.	1992-1994	35.000,00
CHRISTINA LAMPROPOULOU	MEP DESIGN AND SUPERVISION OF INSTALLATION FOR KINDERGARTEN STATION IN PALLINI, ATHENS, GREECE.	1993	53.000,00
MUNICIPALITY ILIOUPOLIS ATHENS, GREECE	MEP DESIGN AND SUPERVISION OF INSTALLATION FOR ENVIRONMENT AREA AT 2nd HIGH SCHOOL IN ILIOUPOLI, ATHENS, GREECE.	1992-1993	23.000,00

HOSPITALS AND CLINICS

ENTITY	PROJECT DESCRIPTION	PROJECT PERIOD	MEP BUDGET IN EURO
FRONTIS SA	MEP DESIGN OF INSTALLATION FOR FIRST FLOOR ADDITION FOR HEMODIALYSIS UNIT IN THE MUNICIPALITY OF ELEFSINAS	2017	400.000,00
FRONTIS SA	MEP DESIGN OF INSTALLATION TO CHANGE THE USE OF A FOUR STOREY BUILDING FROM WAREHOUSE -OFFICE BUILDING TO HEMODIALYSIS UNIT IN THE MUNICIPALITY OF KERATSINI - DRAPETSONAS	2014-2015	1.000.000,00
MHTERA SA	MEP DESIGN AND SUPERVISION OF INSTALLATION IN NEW ORTHOPEDIC SURGICAL, HOSPITAL "MHTERA", ATHENS	2011	200.000,00
YGEIA SA	MEP DESIGN AND SUPERVISION OF INSTALLATION FOR FACILITIES RENOVATION AND RECONSTRUCTION OF COUNTRY HEALTHCARE FOUNDATION "HEALTH" (MASTER PLAN II), ATHENS	2011 - 2012	1.000.000,00
SARNITEC SA	MEP DESIGN AND SUPERVISION OF INSTALLATION FOR RENOVATION OF VARIOUS SPACES (MASTER PLAN) "MHTERA" HOSPITAL, ATHENS	2011	200.000,00
MHTERA SA	MEP DESIGN AND SUPERVISION OF INSTALLATION FOR WORKSHOPS, IN SEVERAL SPACES, IN BASEMENT "MHTERA" HOSPITAL, ATHENS	2011	1.000.000,00
SARNITEC SA	MEP DESIGN AND SUPERVISION OF INSTALLATION OF PEDIATRICS CLINIC IN 5 th FLOOR OF THE HOSPITAL "MHTERA", ATHENS	2010	800.000,00
SARNITEC SA	MEP DESIGN AND SUPERVISION OF INSTALLATION FOR MODERNIZATION AND CREATION UNIT SURGERY DAY CLINIC, AT THE 1 st FLOOR OF "MOTHER" HOSPITAL	2010	1.500.000,00
SARNITEC SA	MEP DESIGN AND SUPERVISION OF INSTALLATION FOR FACILITIES RENOVATION 6 th AND 7 th FLOOR (GYNECOLOGY) HOSPITAL "MHTERA"	2010	500.000,00
SARNITEC SA	MEP DESIGN AND SUPERVISION OF INSTALLATION FOR OFFICE ADMINISTRATION ON 7 th FLOOR OF HOSPITAL "MHTERA"	2010	200.000,00
YGEIA SA	MEP DESIGN AND SUPERVISION OF INSTALLATION FOR FACILITIES TRANSFORMATION SECTION OF 6 th FLOOR IN LIBRARY	2010	100.000,00
YGEIA SA	MEP DESIGN AND SUPERVISION FOR BMS INSTALLATION FOR HOSPITAL "YGEIA"	2010	60.000,00
YGEIA SA	MEP DESIGN AND SUPERVISION FOR INSTALLATION PEDESTRIANS BRIDGE FROM "MHTERA" HOSPITAL TO "YGEIA" HOSPITAL	2010	500.000,00
YGEIA GROUP	ELECTRICAL DESIGN AND SUPERVISION FOR RECONSTRUCTION DIFFERENT SECTIONS OF "YGEIA" HOSPITAL	2010	2.500.000,00

SARNITEC SA	MEP DESIGN AND SUPERVISION FOR INSTALLATION OF RENOVATION AND CONVERSION OFFICE SPACE OF ADMINISTRATION ON 7th FLOOR, DAY CLINIC, SURGERY, HOSPITAL UNITS, PEDIATRIC WING etc. HEALTHCARE FOUNDATION "MHTEA"	2009-2010	2.800.000,00
SISMANOGLIO GENERAL HOSPITAL	MEP DESIGN OF INSTALLATION FOR EXTENSION RENOVATION LAB BLOOD, "SISMANOGLIO", ATHENS	2008-2009	400.000,00
FRONTIS SA	MEP DESIGN AND SUPERVISION OF INSTALLATIONS FOR NEW HEMODIALYSIS UNIT OF 30 BEDS IN ELEUSINA	2008-2009	700.000,00
PSYCHIATRIC HOSPITAL OF CORFU	MEP DESIGN AND SUPERVISION OF INSTALLATION FOR RESTORATION AND CONSTRUCTION OUTPATIENT CLINIC, CORFU	2006-2008	293.000,00
D. LINOS-ATH. LINOI	MEP DESIGN AND SUPERVISION OF INSTALLATION FOR FACILITIES OF CLINIC IN MAROUSI	2006	260.000,00
GAS SUPPLY COMPANY OF ATTICA SA	MEP DESIGN AND SUPERVISION FOR INSTALLATION UNITS CO-PRODUCTION OF ELECTRICITY - HEAT-COOL USING NATURAL GAS TO THE GENERAL HOSPITAL "EVANGELISMOS" AND FULL VERSION OF STUDIES AND SUBMISSION FOR THE ISSUANCE AND INTEGRATION IN ACTION 2.1.4 OF THE OPERATIONAL PROGRAMME COMPETITIVENESS	2005	3.500.000,00
GAS SUPPLY COMPANY OF ATTICA SA	MEP DESIGN AND SUPERVISION FOR INSTALLATION UNITS CO-PRODUCTION OF ELECTRICITY - HEAT-COOL USING NATURAL GAS TO THE GENERAL HOSPITAL "GENIMATAS" AND FULL VERSION OF STUDIES AND SUBMISSION FOR THE ISSUANCE AND INTEGRATION IN ACTION 2.1.4 OF THE OPERATIONAL PROGRAMME COMPETITIVENESS	2005	2.000.000,00
GAS SUPPLY COMPANY OF ATTICA SA	MEP DESIGN AND SUPERVISION FOR INSTALLATION UNITS CO-PRODUCTION OF ELECTRICITY - HEAT-COOL USING NATURAL GAS TO THE GENERAL HOSPITAL "SISMANOGLIO" AND FULL VERSION OF STUDIES AND SUBMISSION FOR THE ISSUANCE AND INTEGRATION IN ACTION 2.1.4 OF THE OPERATIONAL PROGRAMME COMPETITIVENESS	2005	1.700.000,00
GAS SUPPLY COMPANY OF ATTICA SA	MEP DESIGN AND SUPERVISION FOR INSTALLATION UNITS CO-PRODUCTION OF ELECTRICITY - HEAT-COOL USING NATURAL GAS TO THE GENERAL "KAT" HOSPITAL AND FULL VERSION OF STUDIES AND SUBMISSION FOR THE ISSUANCE AND INTEGRATION IN ACTION 2.1.4 OF THE OPERATIONAL PROGRAMME COMPETITIVENESS	2005	1.600.000,00
GAS SUPPLY COMPANY OF ATTICA SA.	MEP DESIGN AND SUPERVISION FOR INSTALLATION UNITS CO-PRODUCTION OF ELECTRICITY - HEAT-COOL USING NATURAL GAS TO THE GENERAL "ATTIKON" HOSPITAL AND FULL VERSION OF STUDIES AND SUBMISSION FOR THE ISSUANCE AND INTEGRATION IN ACTION 2.1.4 OF THE OPERATIONAL PROGRAMME COMPETITIVENESS	2005	1.700.000,00
CLINICAL VOUGIOUKLAKEIO	PRE MEP DESIGN AND SUPERVISION FOR CLINIC RENOVATION "VOUGIOUKLAKEIO "	2005	1.200.000,00
GAS SUPPLY COMPANY OF ATTICA SA	MEP DESIGN AND SUPERVISION FOR INSTALLATION OF BURNER GAS NETWORKS REPLACEMENT AND CONSTRUCTION OF NEW BOILER GAS SUPPLY OF WEST ATTICA GENERAL HOSPITAL "AGIOS PANTELEIMON"	2004-2005	112.153,00
GAS SUPPLY COMPANY OF ATTICA SA.	MEP DESIGN AND SUPERVISION FOR INSTALLATION OF BURNER GAS NETWORKS REPLACEMENT AND CONSTRUCTION OF NEW GAS BOILER SUPPLY OF GENERAL HOSPITAL OF WEST ATTICA "SAINT BARBARA"	2004-2005	114.747,00

GAS SUPPLY COMPANY OF ATTICA SA	MEP DESIGN AND SUPERVISION FOR INSTALLATION FOR A BURNER GAS NETWORKS REPLACEMENT AND CONSTRUCTION OF NEW BOILER GAS SUPPLY OF GENERAL HOSPITAL OF WEST ATTICA "ATTICA"	2004-2005	33.204,00
GAS SUPPLY COMPANY OF ATTICA SA	MEP DESIGN AND SUPERVISION FOR INSTALLATION A NEW REPLACEMENT BURNER GAS NETWORKS AND CONSTRUCTION OF NEW BOILER GAS SUPPLY OF GENERAL HOSPITAL OF WEST ATTICA "METAXA"	2004-2005	45.563,00
GAS SUPPLY COMPANY OF ATTICA SA	MEP DESIGN AND SUPERVISION FOR INSTALLATION BURNER GAS NETWORKS REPLACEMENT AND CONSTRUCTION OF NEW BOILER GAS SUPPLY OF GENERAL HOSPITAL OF WEST ATTICA "TZANIO"	2004-2005	79.714,00
EUROMEDICA SA	TECHNICAL ADVISORS FOR MEP INSTALLATIONS AND MAINTENANCE	2000-TO TODAY	
LESVOS PREFECTURE	MEP DESIGN FOR REGIONAL PUBLIC HEALTH LABORATORY	2000	176.000,00
CLINICAL THERAPEUTICS SA	CONTROL STUDY FOR MEP DESIGN AND INSTALLATIONS AND REFURBISHING EXPANSION	2000-2001	2.935.000,00
EUROMEDICA A.E.	MEP DESIGN AND SUPERVISION FOR INSTALLATION IVF IN THE TOWER OF ATHENS	2000-2001	73.000,00
DEPANOM	MEP DESIGN AND SUPERVISION FOR INSTALLATION REFIT WING "AHEPA" AT EVANGELISMOS HOSPITAL	1999-2001	2.054.000,00
EUROMEDICA SA ATHINEON A'	IMPROVEMENT OF MEP DESIGN	1999-2001	293.000,00
EUROMEDICA SA ATHINEON B'	DESIGN OF FIRE PROTECTION	1999	29.000,00
DODECANESE PREFECTURE	MEP DESIGN AND SUPERVISION FOR INSTALLATION FLOOR ADDITION SECTION GENERAL HOSPITAL KOS	1996	1.174.000,00
PSYCHIATRIC HOSPITAL OF CORFU	INSTALLATION REFIT ARETAIOS LISTED BUILDING HOUSING FOR CHRONIC PATIENTS	1995-1999	235.000,00
MUNICIPALITY KALAMATAS	MEP DESIGN AND SUPERVISION FOR INSTALLATION AND CONVERSION OF LISTED BUILDING "LALEA" IN MENTAL HEALTH CENTER	1992-1993	88.000,00

TRANSPORTATION (RAILWAY STATIONS – AIRPORTS)

ENTITY	PROJECT DESCRIPTION	PROJECT PERIOD	MEP BUDGET IN EURO
INTERNATIONAL AIRPORT OF ATHENS " ELEFTHERIOS VENIZELOS "	MEP DESIGN OF INSTALLATION FOR THE EXTRA SENGEN REGION IN AIA	2015	1.000.000,00
LAMDA FLISVOS MARINA S.A.	MEP DESIGN OF INSTALLATION FOR THE AREA OF MARINAS FLISVOU, PIRAEUS	2014	1.000.000,00
SARNITEC SA	MEP DESIGN OF INSTALLATION FOR THE RENOVATION OF BUILDINGS 48,58,56 OLYMPIC AIR IN AIA, ATHNES	2009	1.000.000,00
MINISTRY OF TRANSPORT AND COMMUNICATIONS YPA	MEP DESIGN OF INSTALLATION FOR THE MINISTRY OF TRANSPORT AND COMMUNICATIONS		
ISAP SA	MEP DESIGN OF INSTALLATION OF NEW STATE AIRPORT ANDRAVIDAS.	2002	3.000.000,00
ERGOSE SA	MEP DESIGN FOR INSTALLATION STATION RENEWAL "EIRHNH"	2001-2002	1.000.000,00
ERGOSE A.E.	MEP DESIGN FOR RAILWAY STATION KIATOU	2001	500.000,00
MINISTRY OF TRANSPORT AND COMMUNICATIONS YPA	MEP DESIGN FOR INSTALLATION RAILWAY STATION "AGIOI THEODORI"	2001	500.000,00
ERGOSE SA	FINAL MEP DESIGN FOR INSTALLATION SPACE CONSOLIDATION OF CENTRAL MACEDONIA AIRPORT IN THESSALONIKI FOR PARTICIPATION IN THE COMPETITION	2001	1.761.000,00
ALFA ENGINEERING SA	MEP DESIGN FOR INSTALLATION BUILDING PASSENGER AND LANDSCAPING SURROUNDING AREA OF RAILWAY STATION MOLOU	1997-1999	428.000,00
	FINAL MEP DESIGN FOR THESSALONIKI AIRPORT FACILITIES FOR PARTICIPATION IN THE COMPETITION	1992	880.000,00

INDUSTRIAL BUILDINGS – WAREHOUSES

ENTITY	PROJECT DESCRIPTION	PROJECT PERIOD	MEP BUDGET IN EURO
MOTODYNAMIKI S.A.	MEP DESIGN AND SUPERVISION OF INSTALLATION FOR “MOTODYNAMIKI” (GREEK YAMAHA’S MOTOR FOR MOTORBIKES AND MARINE ENGINES REPRESENTATIVE) HEAD OFFICE, 2500m ² OFFICE AREAS, 20.000 m ² STORE, IN ASPTOPYRGO, ATTICA.	2008-2009	3.000.000,00
CHRYSLER JEEP HELLAS	MEP DESIGN AND SUPERVISION OF INSTALLATION FOR “CHRYSLER-JEEP-DODGE” CAR GARAGE, AT VOULIAGMENIS AVENUE.	2007	350.000,00
KASTRI S.A.	MEP DESIGN AND SUPERVISION OF INSTALLATION FOR “KASTRI” WOOD PROCESSING FACTORY AT ELEFSINA.	2003-2004	650.000,00
K. BALAFAS A.T.E.	MEP DESIGN AND SUPERVISION OF INSTALLATION FOR “OMP – EUROPE S.A.” CD-DVD PRODUCTION FACTORY.	2002	3.000.000,00
VOGIATZOGLOU SYSTEMS S.A.	MEP DESIGN AND SUPERVISION OF INSTALLATION FOR “VOGIATZOGLOU SYSTEMS” LOGISTIC CENTER (20.000m ² AREA), AT INOFYTA, ATTICA.	2002	1.500.000,00
ERGOSE S.A. (GREEK RAILWAY ORANIZATION)	MEP DESIGN OF INSTALLATION FOR METAL CONSTRUCTIONS COMPLEX, AT THRIASSIO AREA.	2001	3.700.000,00
ERGOSE S.A. (GREEK RAILWAY ORANIZATION)	MEP DESIGN OF INSTALLATION FOR “O.S.E. (GREEK RAILWAY ORANIZATION)” HACKSTAND BUILDING, AT THRIASSIO AREA.	2001	2.800.000,00
ELTA S.A.	FINAL MEP DESIGN OF INSTALLATIONS FOR ATTICA SORTING CENTRE BUILDING, FOR PARTICIPATION IN A COMPETITION.	2001	3.600.000,00
G. KOULOURIS S.A.	MEP DESIGN AND SUPERVISION OF INSTALLATION FOR NEW GARAGE 2000m ² , AT GLYKA NERA, ATTICA.	2000	352.000,00
GENERAL WAREHOUSE OF GREECE S.A.	MEP DESIGN FOR RENOVATION OF ELECTRICAL INSTALLATIONS IN A GENERAL WAREHOUSE AT PIRAEUS, GREECE.	1992	29.000,00
ERGOPLAST	MEP DESIGN AND SUPERVISION OF INSTALLATION FOR FIRST FLOOR ADDITION (1.000m ²) IN A WAREHOUSE.	1991-1992	23.000,00
HARITOS SOT.	MEP DESIGN OF INSTALLATION FOR CRAFT SECTOR OF CLOTHING IN BYRONA, ATTICA.	1989-1992	59.000,00

SPORTS CENTERS AND FACILITIES

ENTITY	PROJECT DESCRIPTION	PROJECT PERIOD	BUDGET IN EURO
ICON FITNESS S.A	MEP INSTALLATIONS DESIGN FOR THE ICON FITNESS GYM IN CHALANDRI	2017	500.000,00
ICON FITNESS S.A	MEP INSTALLATIONS DESIGN FOR THE ICON FITNESS GYM IN PATRA	2017	350.000,00
HOLMES PLACE	MEP DESIGN OF INSTALLATION FOR THE GYM HOLMES PLACE IN GLIFADA	2010	1.500.000,00
STATE MUNICIPALITY KALYVION	MEP DESIGN OF INSTALLATION FOR THE OPEN SWIMMING POOL IN KALYVIA	2009	350.000,00
MUNICIPALITY VRILISSION	MEP DESIGN OF INSTALLATION FOR THE SPORTS CENTER IN VRILISSIA	2005	220.000,00
ENICON Ltd.	MEP DESIGN OF INSTALLATION FOR THE NAUTILUS GYM IN GLYFADA	2003-2004	150.000,00
GREEK AMERICAN ARTS CENTER CHALANDRIOY	MEP DESIGN OF INSTALLATIONS FOR NEW HALL, THE BASKETBALL STADIUM - SWIMMING IN THE AREAS OF ACS	2003-2004	1.000.000,00
ENICON Ltd.	MEP DESIGN OF INSTALLATIONS FOR THE UNIVERSAL STUDIO IN MYTILINI	2003	250.000,00
GENERAL SECRETARIAT OF SPORTS	FINAL MEP DESIGN OF INSTALLATION E.S PANTHESSALIKO IN VOLO MAGNISIAS FOR PARTICIPATION IN THE COMPETITION	2002	10.000.000,00
MINISTRY OF CULTURE	MEP DESIGN OF INSTALLATIONS FOR OLYMPIC TENNIS CENTER FOR PARTICIPATION IN THE COMPETITION	2001	20.000.000,00
STATE DEPARTMENT	MEP DESIGN OF INSTALLATIONS FOR TRANSFORMATION OF B BASEMENT AREA TO GYM AND MULTIPURPOSE ROOM	2000	73.000,00
GENERAL SECRETARIAT OF SPORTS	FINAL MEP DESIGN OF INSTALLATIONS E.S FOR PANKRATION STADIUM IN CRETE HERAKLIO FOR PARTICIPATION IN THE COMPETITION	2000	14.674.000,00
TEI IRAKLEIOU	MEP DESIGN OF INSTALLATIONS FOR GYM AND MULTIPURPOSE ROOM	1997	734.000,00
YP.E.CHO.DE.	MEP DESIGN OF INSTALLATIONS FOR OPEN SWIMMING IN POSITION VOTSALAKIA OF PIREAUS	1997	470.000,00
MUNICIPALITY ASPROPYRGOS	MEP DESIGN OF INSTALLATIONS FOR OPEN SWIMMING IN ASPROPYRGOS	1997	880.000,00
GENERAL SECRETARIAT OF SPORTS	MEP DESIGN OF INSTALLATIONS FOR OPEN SWIMMING P. LIOSION	1995	587.000,00
GENERAL SECRETARIAT OF SPORTS	MEP DESIGN OF INSTALLATIONS FOR OPEN SWIMMING POOL IN PERISTERI	1994	734.000,00

CAR STATIONS

ENTITY	PROJECT DESCRIPTION	PROJECT PERIOD	MEP BUDGET IN EURO
DUTY FREE SHOPS SA	MEP DESIGN AND SUPERVISION OF INSTALLATION FOR REDESIGN - EXTENSION AND INTEGRATION STATION IN NEW PROMACHONA	2007	450.000,00
EASY PARKING	PARTICIPATION IN PROJECT MANAGEMENT AS TEAM RESPONSIBLE FOR MEP SUPERVISION OF INSTALLATIONS FOR PARKING FACILITIES FOR MOTOR AT GLYFADA	2006	
EASY PARKING	PARTICIPATION IN PROJECT MANAGEMENT AS TEAM RESPONSIBLE FOR MEP SUPERVISION FOR MOTOR INSTALLATION FOR PARKING IN ATHENS	2006	
MINISTRY OF JUSTICE	MEP DESIGN OF INSTALLATION FOR COURTHOUSE IN TRIKALA	2000	2.935.000,00
CRETE REAL ESTATE SA	MEP DESIGN OF INSTALLATION FOR BUILDING IN CHANIA CRETE	2006	3.600.000,00

PLACES OF RELIGIOUS WORSHIP - CHURCHES

ENTITY	PROJECT DESCRIPTION	PROJECT PERIOD	MEP BUDGET IN EURO
HOLY TEMPLE AG. ANARGYROI	MEP DESIGN FOR INSTALLATION TO COMPLETION WORK TO HOLY TEMPLE IN AG.PARASKEVI	2011 - 2012	200.000,00
HOLY MONASTERY VOMVOKOUS	MEP DESIGN FOR INSTALLATION FOR EXTENSION AND RENOVATION MONASTERY ST JOHN VOMVOKOUS	2010	400.000,00
ARCHDIOCESE OF ATHENS	MEP DESIGN FOR INSTALLATION FOR THE REPAIR AND STRENGTHENING OF THE HOLY VIRGIN MARY CHURCH CHRYSOSPILIOISSAS	2006	50.000,00
TETHRON ATE	MEP DESIGN FOR INSTALLATION FOR THE LIGHTING OF THE TEMPLE	2006	350.000,00
MONASTERY OF SAINT DIMITRIOS DAMALA	MEP DESIGN FOR INSTALLATION FOR THE HOLY TEMPLE	2006	420.000,00
MUNICIPALITY FALAISIAS	MEP DESIGN FOR INSTALLATION ANCHORS AND REHABILITATION OF BYZANTINE CHURCH AGION APOSTOLON IN LIONTARI ARKADIAS	2005-2006	120.000,00
HOLY TEMPLE ANARGYRON	MEP DESIGN FOR INSTALLATION TO THE HOLY TEMPLE	2004	220.000,00
ATHENS METRO	MEP DESIGN FOR INSTALLATION FOR THE CHURCH "PANAGIA PANTANASSA" IN MONASTIRAKI	2003	380.000,00
HOLY MONASTERY ARIAS NAYPLIOY	MEP DESIGN FOR INSTALLATION FOR PLANT RENOVATION MONASTERY	2003	210.000,00
CHURCH OF SAINT DEMETRIUS	MEP DESIGN FOR INSTALLATION FOR CHURCH AG.DIMITRIOS AG.PARASKEVI	2002	200.000,00

PRESERVABLES

ENTITY	PROJECT DESCRIPTION	PROJECT PERIOD	MEP BUDGET IN EURO
MINISTRY OF CULTURE AND SPORT 25th BYZANTINE ANTIQUITIES	MEP DESIGN MOUNTING - RECOVERY - PROMOTION – REUSE FORTRESS “BOURTZI” IN NAFPLIO.	2013-2014	1.400.000
MUNICIPALITY SYKIA	MEP DESIGN OF INSTALLATIONS FOR RENOVATION OF LISTED BUILDING “CHILLER”, KIATO.	2011 - 2012	300.000,00
GROUP 4 SA	MEP DESIGN OF INSTALLATIONS FOR LISTED BIULDING RENOVATION TO HOUSING OFFICES OF THE COMPANY “GROUP 4”.	2010	1.500.000,00
PUBLIC WORD SA	MEP DESIGN OF ISNTALLATIONS OF PLANT CONVERSION LISTED BUILDING TO HOUSING “PUBLIC” STORE IN PIRAEUS.	2009	800.000,00
HELLENIC PARLIAMENT	MEP DESIGN OF INSTALLATIONS FOR THE REHABILITATION AND ARRANGEMENT OF LISTED BUILDING IN STREET FILELLINON, ATHENS.	2008-2011	900.000,00
MUNICIPALITY OF LARISSA	MEP DESINGS OF INSTALLATIONS FOR THE PROJECT “BEZESTENI” IN LARISSA.	2008-2011	500.000,00
POSEIDONION GRAND HOTEL - INITIATIVE SPETSON SA	MEP DESIGN AND SUPERVISION OF INSTALLATIONS FOR RENOVATION OF HOTEL “POSEIDONION” SPETSES.	2006	1.000.000,00
MANAGEMENT SUPPORT BUSINESS & MONEY STUDIES PROGRAMMES & PROJECTS SA	MEP DESIGN OF INSTALLATIONS FOR THE HERITAGE OF “SAINT FILOTHEIS”.	2006	
MUNICIPALITY FALAISIAS	MEP DESIGN OF INSTALLATIONS FOR MOUNTING AND REHABILITATION OF BYZANTINE CHURCH “AGION APOSTOLON” AT LIONTARI ARKADIAS.	2005-2006	120.000,00
SERPIERIS	MEP DESINGS OF ISNTALLATIONS FOR THE TOWER “VASILISSIS”.	2005	65.000,00
MUNICIPALITY XYLOKASTROU	PRE MEP DESIGN OF INTALLATIONS FOR THE MANSION “NOTARA”- PRIMARY SCHOOL IN LAGKADEIKA.	2005	100.000,00
PREFECTURE OF SAMOS	MEP DESIGN OF INSTALLATIONS FOR CONVERSION OF FORMER TOBACCO FACTORY TO “EPICURE CONFERENCE-CULTURAL CENTRE OF SAMOU”.	2005	850.000,00
NATIONAL MUSEUM OF CONTEMPORARY ART	MEP DESING OF INSTALLATIONS FOR THE NATIONAL MUSEUM OF CONTEMPORARY ART IN OLD BUILDING “FIX”.	2004-2006	11.000.000,00
MUNICIPALITY OF NAXOY	MEP DESING OF INSTALLATIONS FOR THE REPAIR OF SCHOOL “URSULINE” NAXOY AND CONVERSION OF A CULTURAL CENTRE.	2004-2005	500.000,00
MUNICIPALITY OF PATRON	MEP DESIGN OF INSTALLATIONS FOR THE RECONSTRUCTION RENOVATOIN OF MARKET “ARGYRI”.	2004	580.000,00

PUBLIC	MEP DESING OF ISNTALLATIONS FOR RESTORATION OF MANSION "PALLI" AT SYNTAGMA AND CONFIGURATION OF A DEPARTMENT STORE AND RESTAURANT	2004	2.200.000,00
PREFECTURE XIOU	MEP DESING OF ISNTALLATIONS FOR RESTORATION OF CASTLE "TOWER PITYOUS" CHIOY	2003-2004	150.000,00
IONIO UNIVERSITY	MEP DESING OF INSTALLATIONS FOR KAPODISTRIA BUILDING RENOVATION IN CORFU	2003-2004	1.500.000,00
UNIVERSITY OF THESSALY	MEP DESING OF INSTALLATIONS FOR RENOVATION OF LISTED BUILDING "TSIKRIKI" IN VOLOS	2003-2004	650.000,00
MUNICIPALITY FALAISIAS	MEP DESINGS OF INSTALLATIONS FOR MOUNTING-RESTORATION BYZANTINE TEMPLE "AGION APOSTOLON".	2003-2004	200.000,00
MUNICIPALITY KARLOVASI	MEP DESIGN OF ISNTALLATIONS FOR PORFYRIADAS SCHOOL IN SAMOS.	2003-2004	500.000,00
NATIONAL INSTITUTE OF SACRED VIRGIN EVANGELISTRIAS TINOU	MEP DESIGN AND SUPERVISION OF INSTALLATIONS FOR THE RENOVATION OF OFFICES AND MUSEUM OF THE HOLY FOUNDATION.	2003-2004	1.800.000,00
STRUCTURAL CRETE SA	MEP DESIGN – CONSTRUCTION OF POLICE DIRECTION IRAKLEIOU.	2003	1.800.000,00
ATHENS METRO SA	MEP DESIGN OF INSTALLATIONS IN CHURCH "PANTANASSA" IN MONASTIRAKI.	2003	200.000,00
DEMOCRITUS UNINERSITY OF THRACE	MEP DESIGN OF INSTALLATIONS FOR RESTORATION OF LISTED BUILDING "STALIOU" IN XANTHI.	2002	400.000,00
SILK MUSEUM IN MANSION KOURTIDI SOUFLI	MEP DESIGN AND SUPERVISION OF INSTALLATIONS FOR RESTORATION OF LISTED BUILDING.	2001	150.000,00
MUNICIPALITY LEONIDIOU	MEP DESIGN AND SUPERVISION OF INSTALLATIONS FOR RESTORATION OF MANSION "TSIKALIOTI".	2001	100.000,00
CULTURAL FOUNDATION ETVA BANK	MEP DESIGN OF INSTALLATIONS FOR RESTORATION OF 2-STOREY BUILDING IN PLAKA FOR HOUSING OFFICES OF CULTURAL FOUNDATION ETVA BANK.	1999-2000	267.000,00
ETVA BANK SA	MEP DESIGN OF ISNTALLATIONS FOR LISTED BUILDING AND CONVERSION INTO CENTRAL BANK BRANCH ETVA BANK PATRON AND TWO FLOORS OFFICE.	1999	470.000,00
MUNICIPALITY OF CHANIA	MEP DESIGN OF INSTALLATIONS FOR BUILDING FEATURE "ARSENALIOU" IN CHANIA.	1999	587.000,00
D.E.A.E	MEP DESIGN OF INSTALLATIONS FOR REFIT TANNERS "KORNILAKI" IN ERMOUPOLI SYROU.	1999-2004	780.000,00
BALTHAZAR	MEP DESIGN OF INSTALLATIONS FOR BUILDING RECONSTRUCTION.	1999	235.000,00
MUNICIPALITY PSACHNON	MEP DESING OF INSTALLATIONS FOR THREE LISTED BUILDINGS IN CENTRAL SQUARE IN THE MUNICIPALITY OF PSACHNON.	1999	220.000,00
PSYCHIATRIC HOSPITAL OF CORFU	MEP DESING OF INSTALLATIONS FOR REFIT OF LISTED BUILDING ARETAIOS FOR HOUSING CHRONIC PATIENTS.	1999	352.000,00

MINISTRY OF CULTURE	MEP DESING OF INSTALLATIONS FOR TOTAL PROMOTION OF "AKROPOLEOS CASTLE" IN SIFNOU ISLAND.	1998	176.000,00
MINISTRY OF CULTURE T.A.P.A	MEP DESING OF INSTALLATIONS FOR TOTAL PROMOTION OF AKROPOLEOS CASTLE IN SIFNOU ISLAND.	1996	169.000,00
MINISTRY OF CULTURE	MEP DESIGN OF INSTALLATIONS FOR BUILDING TRANFORMATION IN PIRAEUS 83 & SALAMINOS INTO "ARCHIVES MUSEUM G.PAPANDREOU".	1994	44.000,00
MUNICIPALITY KALAMATAS	MEP DESIGN OF INSTALLATIONS FOR TRANFORMATION OF LISTED BUILDING "LALEA" IN MENTAL HEALTH CENTER.	1993	88.000,00

RENOVATIONS

ENTITY	PROJECT DESCRIPTION	PROJECT PERIOD	MEP BUDGET IN EURO
ANEE TEXNABA A.E.SPRING MARINE BULK S.A.SPRING MARINE MANAGMENT S.A	MEP DESIGN AND SUPERVISION FOR THE 3.300m ² OFFICE RENOVATION IN PALAIO FALIRO IN ATHENS	2017	1.500.000,00
AINOS S.A	MEP DESIGN AND SUPERVISION OF INSTALLATION FOR THE RENOVATION OF HOTEL "AINOS" IN KEFALONIA	2016	500.000,00
IOM	MEP DESIGN AND SUPERVISION TO RENOVATE BUILDING DOM IN ATHENS	2016	380.000,00
HERMES GREECE S.A	MEP DESIGN AND SUPERVISION FOR THE HERMES RENOVATION AND EXTENSION EQUIPMENT, IN THE CITY LINK TRADE CENTER AT ATHENS	2016	600.000,00
SKLAVENITIS S.A	MEP DESIGN AND SUPERVISION FOR THE RENOVATION OF THE MAIN WAREHOUSES BUILDINGS AND REFORM TO OFFICE BUILDING , 10.000M ²	2014	4.000.000,00
MUNICIPALITY SYKION	MEP DESIGN OF INSTALLATIONS FOR RENOVATION OF LISTED BUILDING "CHILLER" IN KIATO	2011 - 2012	300.000,00
EMPORIKH BANK SA	MEP DESIGN OF INSTALLATIONS FOR RENOVATION OF BANKING BRANCH IN ARGOS	2011 - 2012	80.000,00
YGEIA SA	MEP DESIGN AND SUPERVISION OF INSTALLATIONS FOR RENOVATION - RECONSTRUCTION OF HEALTHCARE FOUNDATION YGEIA (MASTER PLAN II)	2011 - 2012	1.000.000,00
MHTERA SA	MEP DESIGN AND SUPERVISION OF INSTALLATIONS IN NEW ORTHOPEDIC SURGICAL HOSPITAL MHTERA	2011	200.000,00
SARNITEC SA	MEP DESIGN OF ISNTALLATIONS FOR RENOVATION OF VARIOUS PLACES (MASTER PLAN) IN HOSPITAL YGEIA	2011	200.000,00
MHTERA SA	MEP DESIGN OF INSTALLATIONS FOR FITTING LABORATORIES IN BASEMENT OF HOSPITAL MHTERA	2011	1.000.000,00
CANDA PHARMACEUTICALS SA	MEP DESIGN OF INSTALLATIONS FOR RENOVATION OF OFFICES SPACE	2011	250.000,00
EMPORIKH BANK SA	MEP DESIGN OF INSTALLATIONS FOR RENOVATION ON BANKING BRANCH OF ROADS THEMISTOKLEOUS AND PANEPISTHMIOY IN ATHENS	2011	60.000,00
SARNITEC SA	MEP DESIGN OF INSTALLATIONS OF PEDIATRICS CLINIC IN THE 5 TH FLOOR OF THE HOSPITAL MHTERA	2010	800.000,00

SARNITEC SA	MEP DESIGN OF INSTALLATIONS FOR MODERNIZATION AND SURGERY DAY CLINIC CREATION UNIT IN 1 ST FLOOR IN HOSPITAL MHTERA	2010	1.500.000,00
SARNITEC SA	MEP DESIGN OF ISNTALLATIONS FOR RENOVATION OF 6 TH AND 7 TH FLOOR (GYNECOLOGY CLINIC) OF HOSPITAL MHTERA	2010	500.000,00
SARNITEC SA	MEP DESIGN OF INSTALLATIONS FOR OFFICE ADMINISTARION OF 7 TH FLOOR OF HOSPITAL MHTERA	2010	200.000,00
YGEIA SA	MEP DESIGN OF ISNTALLATIONS FOR CHAMBER TRANSFORMATION OF 6 TH FLOOR IN LIBRARY	2010	100.000,00
YGEIA SA	MEP DESIGN OF INSTALLATIONS BMS ELECTRICAL INSTALLATION IN HOSPITAL YGEIA	2010	60.000,00
YGEIA SA	MEP DESIGN OF INSTALLATIONS OF PEDESTRIANS BRIDGE INTERCONNECT HOSPITAL MHTERA-YGEIA	2010	500.000,00
POSTAL SAVINGS BANK SA	MEP DESIGN OF INSTALLATIONS FOR RENOVATION Y/S IN THE MAIN BUILDING OF TT PESMAZOGLOU OF ATHENS	2010	300.000,00
ABM LTD.	MEP DESIGN OF ISNTALLATIONS FOR RENOVATION OF BANKING BRANCH TT KALITHEAS	2010	50.000,00
EMPORIKH BANK SA	MEP DESIGN OF INSTALLATIONS FOR RENOVATION OF BANKING BRANCH IN PASALIMANI	2010	160.000,00
EMPORIKH BANK SA	MEP DESIGN OF INSTALLATIONS FOR RENOVATION OF BANKING BRANCH IN PATRA	2010	150.000,00
EMPORIKH BANK SA	MEP DESIGN OF INSTALLATIONS FOR RENOVATION OF BANKING BRANCH IN NAYPAKTO	2010	140.000,00
EMPORIKH BANK SA	MEP DESIGN OF INSTALLATIONS FOR RENOVATION OF BANKING BRANCH IN METAKSOURCEIO	2010	160.000,00
EGYPTIAN EMBASSY	MEP DESIGN OF INSTALLATIONS FOR RESIDENCE IN EGYPTIAN AMBASSADOR IN FILOTHEI	2010	350.000,00
MCA EDITIONS SA	MEP DESIGN OF INSTALLATIONS FOR REARRANGEMENT OF BUILDING OFFICES	2010	800.000,00
SARNITEC SA	MEP DESIGN OF INSTALLATIONS FOR RENOVATION OF BUILDINGS 48.57.56 OF OLYMPIC AIR IN DAA	2010	1.000.000,00
AQUA SPORT SA	MEP DESIGN OF INSTALLATIONS FOR HOUSING THE OFFICES OF BOEHRINGER INGELHEIM	2010	1.000.000,00
HOLY MONASTERY VOMVOKOUS	MEP DESIGN OF INSTALLATIONS FOR EXTENSION RENOVATION OF MONASTERY ST. IOANNH VOMVOKOUS	2010	400.000,00
YGEIA GROUP	MEP DESIGN OF INSTALLATIONS FOR RECONSTRUCTION OF DIFFERENT SECTIONS OF HOSPITAL YGEIA	2010	2.500.000,00

GROUP 4 SA	MEP DESIGN OF INSTALLATIONS FOR RENOVATION OF LISTED BUILDING TO HOUSING OFFICES OF THE COMPANY GROUP 4	2010	1.500.000,00
SARNITEC SA	MEP DESIGN OF RENOVATION AND CONVERSION OFFICE SPACES ADMINISTRATION 7 TH FLOOR, DAY CLINIC, SURGERY,HOSPITAL UNITS, PEDIATRIC SECTION ETC OF NURSE FOUNDATION MHTERA	2009-2010	2.800.000,00
SAMARIA HOTEL – AFOI N.PEROGIANNH SA	MEP DESIGN AND SUPERVISION OF INSTALLATIONS FOR RENOVATION AND EXPANSION OF HOTEL 5*100 BEDS IN CHANIA OF CRETE	2009-2013	2.000.000,00
AFOI CHELLA	MEP DESIGN OF INSTALLATIONS FOR REFIT TWO-STOREY BUILDING'S OFFICES DUE TO DESTRUCTION FROM FIRE IN AGIA PARASKEYH	2009	600.000,00
PUBLIC WORD SA	MEP DESIGN OF INSTALLATIONS FOR CONVERSION OF LISTED BUILDING FOR HOUSING PUBLIC STORE IN PIRAEUS	2009	800.000,00
K/X THEKAT ATE NIRIKOS TECHNICAL SA	MEP DESIGN OF INSTALLATIONS FOR CHANGE OF USAGE BUILDING IN VOLOS AND HOUSING SERVICES OF PREFECTURE MAGNISIAS	2009	1.000.000,00
SARNITEC SA	MEP DESIGN OF INSTALLATIONS FOR THE RENOVATION OF BUILDINGS 48.58.56 OF OLYMPIC AIR IN AIA	2009	1.000.000,00
NATIONAL MUSEUM OF CONTEMPORARY ART	MEP DESIGN OF INSTALLATIONS FOR THE CONVERSION OF SPACES OF NATIONAL CONSERVATORY FOR HOUSING REPORTS OF EMST	2009	300.000,00
DUTY FREE SHOPS SA	MEP DESIGN OF INSTALLATIONS FOR THE RENOVATION –EXTENSION OF DUTY FREE SHOP IN BORDER NIKHS	2009	500.000,00
SISMANOGLIO GENERAL HOSPITAL	MEP DESIGN OF INSTALLATIONS FOR EXTENSION RENOVATION OF BLOOD DONATION LAB	2008-2009	400.000,00
HENKEL SA	SUPERVISION AND PROJECT MAMAGEMENT : OFFICE RENOVATION HELKEN - RILKEN IN ATHENS	2008	1.000.000,00
MARFIN SA	MARFIN LEASING OFFICE RENOVATION IN KIFISIAS 68 IN ATHENS	2008	280.000,00
GRAND MEDITERRANEO RESORT & SPA HOTEL &TOURISM BUSINESS RECOVERY OF REAL ESTATE LIPANTSIS-MORAIHIS SA	MEP DESIGN AND SUPERVISION FOR 5* RENOVATION, 600 BEDS IN ERMONES, CORFU	2008-2010	10.000.000,00
MARFIN SA	RENOVATION OF FOUR-STOREY OFFICE BUILDING AIGIALEIAS SECURITIES AND PARADISE IN ATHENS	2007	1.300.000,00
MARFIN SA	TWO FLOORS RENOVATION OF BUILDING AIGIALEIAS AND GYZI IN MAROUSI	2007	350.000,00
MARFIN SA	HEADQUARTERS OF MARFIN GROUP IN N. ERYTHREA THISEOS 67	2007	2.500.000,00

POSTAL SAVINGS BANK OF GREECE	MEP DESIGN OF INSTALLATIONS FOR USE AND REDESIGN PROPERTY POSTAL SAVINGS IN RHODES	2007	400.000,00
POSTAL SAVINGS BANK OF GREECE	MEP DESIGN OF INSTALLATIONS FOR THE REDESIGN OF MAIN POSTAL SAVINGS OF THESSALONIKH	2007	200.000,00
CHRYSLER JEEP HELLAS ABEE	MEP DESIGN AND SUPERVISION OF INSTALATIONS FOR THE CAR WORKSHOP CHRYSLER-JEEP-DODGE IN VOULIAGMENHS AVENUE	2007	350.000,00
ATHINAIS SA	MEP DESIGN AND SUPERVISION OF INSTALLATIONS FOR THE CONSTRUCTION OF HOUSES IN LOFT TYPE AT THE HEIGHT ADD TO EXISTING STOREY BUILDING AND CHANGE OF USAGE IN LOTS OF GROUND	2007	2.500.000,00
NOVOTEL ATHENS	MEP DESIGN OF INSTALLATIONS FOR THE RENOVATION OF GROUND OF PUBLIC SPACES HOTEL 4*,400 BEDS	2007	100.000,00
POSEIDONION GRAND HOTEL - INITIATIVE SPETSON SA	MEP DESIGN AND SUPERVISION OF INSTALLATIONS FOR THE RENOVATIONS OF HOTEL "POSEIDONION" IN SPETSES	2006	1.000.000,00
HOTEL "ZATOUNA" - LEGACY P.CH. LYMPEROPOULOU	MEP DESIGN OF INSTALLATIONS FOR CONVERSION OF TWO OLD BUILDINGS IN HOTEL	2006	250.000,00
GALAXY HOTEL IRAKLIO - OIKONOMOU SA	MEP DESIGN OF INSTALLATIONS FOR RENOVATION IN 5* HOTEL IN HERAKLION CRETE	2006	700.000,00
SITIA BEATCH HOTEL - GREEJ TOURIST HOTELS CRETE SA	MEP DESIGN AND SUPERVISION OF INSTALLATIONS FOR THE RENOVATION OF HOTEL WITH 350 BEDS, SITIA CRETE	2006	600.00,00
PSYCHIATRIC HOSPITAL OF CORFU	MEP DESIGN OF INSTALLATIONS FOR RENOVATION AND ADDITION 4-FLOOR BUILDING OUTPATIENT	2006-2008	293.000,00
NEW HOTEL - YES HOTELS	MEP DESIGN AND SUPERVISION OF INSTALLATIONS FOR THE RENOVATION OF 5* HOTEL "OLYMPIC PALACE" IN ROAD FILLENINON IN ATHENS	2006-2011	2.000.000,00
MUNICIPALITY FALANTHOU	MEP DESIGN OF ISNTALLATIONS FOR THE REPAIR AND ADAPTATION TO BUILDING PROGRAMME MUSEOLOGY SAWMILLES AT FOREST MUSEUM IN CHRYSOVITSI RKADIAS	2006	70.000,00
ANAPOLIS K. BIZANIS DEVELOPMENT AND CULTURAL ACTIVITIES EU	MEP DESIGN OF INSTALLATIONS FOR CONVERSION OF OLD MILLS INTO MULTIFUNCTIONAL SPACE MUSEUM EVENTS AND CULTURE	2006	100.000,00
CYPRUS MINISTRY OF COMMUNICATIONS AND WORKS	MEP DESIGN AND SUPERVISION OF INSTALLATIONS FOR RENOVATION REARRANGMENT OF AMBASSADOR RESIDENCE OF CYPRUS	2005	800.000,00
CULTURAL FOUNDATION GROUP PEIRAIOS	MEP DESIGN OF INSTALLATIONS FOR THE RESTORATION OF BUILDING MUSEUM PLINTHIKERAMOPOIAS IN COMPLEX TSALAPATA IN VOLOS	2005	350.000,00

I.DOYRAMPEIS & SONS	MEP DESIGN AND SUPERVISION OF PLANT RENOVATION RESTAURANT	2005	100.000,00
GERLING	MEP DESIGN OF INSTALLATIONS FOR THE RECONSTRUCTION CONVERSION OF FLOORS OF BUILDING KANTOR SA	2005	150.000,00
BERGMAN KORD	MEP DESIGN OF INSTALLATIONS FOR RENOVATION OF OFFICE BUILDING	2005	420.000,00
NATIONAL MUSEUM OF CONTEMPORARY ART	MEP DESIGN OF INSTALLATIONS FOR THE NATIONAL MUSEUM OF CONTEMPORARY ART IN OLD BUILDING FIX	2004-2006	11.000.000,00
PUBLIC	MEP DESIGN OF INSTALLATIONS FOR THE RESTORATION OF MANSION PALLI IN SYNTAGMA AND CONFIGURATION OF A DEPARTMENT STORE AND RESTAURANT	2004	2.200.000,00
MUNICIPALITY NAKSOU	MEP DESIGN OF INSTALLATIONS FOR THE REPAIR OF SCHOOL URSULINON NAKSOU AND CONVERSION OF A CULTURAL CENTRE	2004-2005	500.000,00
OTE SA	MEP DESIGN OF INSTALLATIONS FOR 100 OTE SHOPS- COSMOTE IN GREECE	2004-2005	5.000.000,00
MUNICIPALITY PATREON	MEP DESIGN OF INSTALLATIONS FOR THE RECONSTRUCTION RENOVATION OF MARKET ARGYRI	2004	580.000,00
KANTOR SA	MEP DESIGN AND SUPERVISION OF INSTALLATIONS FOR RENOVATION OF KANTOR SA OFFICE BUILDING ON THE ROADS OMHROU AND VISSARIONOS	2004	800.000,00
AUTO POINT SA	MEP DESIGN OF INSTALLATIONS FOR RENOVATION OF TWO STORES OF VOLVO	2004	250.000,00
PREFECTURE CHIOU	MEP DESIGN OF INSTALLATIONS FOR THE RESTORATION OF CASTLE TOWER PITYOUS CHIOU	2003-2004	150.000,00
NATIONAL INSTITUTE OF SACRED VIRGIN EVANGELISTRIAS TINOU	MEP DESIGN AND SUPERVISION OF INSTALLATIONS FOR RENOVATION OF OFFICES AND MUSEUM OF THE HOLY FOUNDATION	2003-2004	1.800.000,00
IONIO UNIVERSITY	MEP DESIGN OF INSTALLATIONS FOR RENOVATION OF KAPODISTRIA BUILDING IN CORFU	2003-2004	1.500.000,00
UNIVERSITY OF THESSALY	MEP DESIGN OF INSTALLATIONS FOR RENOVATION OF LISTED BUILDING TSIKRIKI IN VOLOS	2003-2004	650.000,00
MUNICIPALITY KARLOVASION	MEP DESIGN OF INSTALLATIONS FOR PORFYRIADAS SCHOOL IN SAMOS	2003-2004	500.000,00
ELINTOUR «POSEIDON RESORT»	MEP DESIGN AND SUPERVISION OF INSTALLATIONS FOR CONVERSION OF SPACES IN CONFERENCE CENTRE OF 500 PEOPLE RENOVATION BAR RESTAURANT OF HOTEL'S "POSEIDON RESORT"	2003-2004	800.000,00
GREEK AMERICAN ARTS CENTER CHALANDRIOU	MEP DESIGN AND SUPERVISION OF INSTALLATIONS FOR THE NEW ROOM, THE BASKETBALL COURT-NATATORIUM IN AREAS OF ACS	2003-2004	1.000.000,00

ATHENS METRO SA	MEP DESIGN OF INSTALLATIONS FOR CHURCH "PANTANASSA" IN MONASTIRAKI	2003	200.000,00
DE.A.E.	MEP DESIGN OF INSTALLATIONS FOR INDUSTRIAL MUSEUM ERMOUPOLIS SYROU	2003	500.000,00
MONASTERY AREIAS NAYPLIOY	MEP DESIGN OF INSTALLATIONS FOR RENOVATION OF IERA MONH (MONASTERY)	2003	210.000,00
PREFECTURE CHIOY Δ.T.Y	MEP DESIGN OF INSTALLATIONS FOR A.E.N MECHANICALS CHIOY	2003	1.500.000,00
«ALBATROSS» HOTELS SA	MEP DESIGN AND SUPERVISION OF INSTALLATIONS FOR RENOVATION OF HOTEL ALBATROSS IN ATHENS	2003	1.200.000,00
GERAKINA SA	MEP DESIGN AND SUPERVISION OF INSTALLATIONS FOR RENOVATION OF SPACE LOBBY,RESTAURANT AND BAR OF HOTEL "GERAKINA BEACH" IN HALKIDIKI	2003	100.000,00
HOTEL «PALIRROIA»	MEP DESIGN AND SUPERVISION OF INSTALLATIONS FOR RENOVATION OF HOTEL PALIRROIA IN CHALKIDA	2003	1.000.000,00
K.DOUIROS SA	MEP DESIGN OF INSTALLATIONS FOR RENOVATION OF HOTEL "JASON" IN ATHENS	2003	
PIRAEUS BANK SA	MEP DESIGN OF INSTALLATIONS FOR RENOVATION OF MANSION KOURTIDH IN SOUFLI AND CONVERSION IN SILK MUSEUM	2003	300.000,00
COMMISSION PROMOTION & CONSOLIDATION OF ARCHAEOLOGICAL SITES MARATHON	MEP DESIGN OF INSTALLATIONS FOR RENOVATION OF MUSEUM AND SURROUNDINGS	2002-2003	250.000,00
PLAZA RESORT AQUIS - AVRANTINIS K.	MEP DESIGN AND SUPERVISION OF INSTALLATIONS FOR RENOVATION OF 5* HOTEL IN OLD FOKEA	2002-2003	3.000.000,00
CENTRAL ATHENS HOTEL	MEP DESIGN AND SUPERVISION OF INSTALLATIONS FOR RENOVATION OF 3*HOTEL(FORMER "APHRODITE"),84 BEDS IN ATHENS	2002-2003	400.000,00
AKTE SA	MEP DESIGN AND SUPERVISION OF INSTALLATIONS FOR RENOVATION OF HOTEL AMAZON IN ATHENS	2002-2003	550.000,00
EKTER SA	MEP DESIGN OF INSTALLATIONS FOR BRANCH NATIONAL BANK OF GREECE PATRON	2002	200.000,00
NATIONAL BANK OF GREECE	MEP DESIGN OF INSTALLATIONS FOR BRANCH NATIONAL BANK OF GREECE CRETE	2002	300.000,00
LITO SA	MEP DESIGN AND SUPERVISION OF INSTALLATIONS FOR RENOVATION OF THREE LITO STORES	2002	300.000,00
HOTEL «KRONOS»	MEP DESIGN AND SUPERVISION OF INSTALLATIONS FOR RENOVATION OF HOTEL "KRONOS" IN ATHENS	2002	350.000,00

HOTEL «STRATOS VASSILIKOS»	MEP DESIGN OF INSALLATIONS FOR RENOVATION OF HOTEL “STRATOS VASSILIKOS”(FORMER “RIVA”) IN ATHENS	2002	750.000,00
HOTEL «ESPERIA PALACE»	MEP DESIGN AND SUPERVISION OF INSTALLATIONS FOR RENOVATION OF HOTEL RESTAURANT “ESPERIA PALACE” IN ATHENS	2002	50.000,00
THE ATHENIAN CALLIRHOE EXCLUSIVE HOTEL	MODIFICATION STUDY AND SUPREVISION OF INSTALLATIONS FOR RENOVATION OF 4* HOTEL (FORMER “CHRISTINA”) IN ATHENS	2002	700.000,00
HSAP SA	MEP DESIGN AND SUPERVISION OF INSTALLATIONS FOR RENEWAL OF STATION EIRHNH	2001-2002	1.000.000,00
BRITISH COUNCIL	MEP DESIGN AND SUPERVISION OF INSTALLATIONS FOR BUILDING RENOVATION OF BRITISH COUNCIL IN KOLONAKI	2001-2002	600.000,00
MINISTRY OF TRANSPORT AND COMMUNICATIONS Y.P.A	MEP DESIGN OF INSTALLATIONS FOR CONSOLIDATION OF CENTRAL SPACES OF AIRPORT MACEDONIA IN THESSALONIKI	2001	1.761.000,00
EUROMEDICA SA ATHINAION A’	MEP DESIGN OF INSTALLATIONS FOR IMROVEMENT	1999	293.000,00
XENIA KASTANIAS	MEP DESIGN AND SUPERVISION OF INSTALLATIONS FOR HOTEL RENOVATION IN KASTANIA KORINTHIAS	1999	117.000,00
DEPANOM	MEP DESIGN OF INSTALLATIONS FOR REFIT OF SECTION AHEPA OF HOSPITAL EVANGELISMOS	1999-2001	2.054.000,00
ETBA SA	MEP DESIGN OF INSTALLATIONS FOR LISTED BUILDING AND CONVERSION INTO CENTRAL BANK BRANCH ETBA PATRON AND TWO FLOORS OFFICE	1999	470.000,00
MINISTRY OF CULTURE T.A.P.A	MEP DESIGN OF INSTALLATIONS FOR THE TOTAL PROMOTION OF THE CASTLE AKROPOLEOS SIFNOU	1996	169.000,00
POSEIDON RESORT – ELINTOUR SA	MEP DESIGN OF INSTALLATIONS FOR RENOVATION IN ROOM HOTEL COMPLEX RESINDANCE 5* IN LOUTRAKI	1996	250.000,00
PSYCHIATRIC HOSPITAL OF CORFU	MEP DESIGN OF INSTALLATIONS FOR REFIT ARETAIOS LISTED BUILDING FOR HOUSING CHRONIC PATIENTS	1995-1999	235.000,00
MUNICIPALITY KALAMATAS	MEP DESIGN OF INSTALLATIONS FOR ARRANGEMENT AND CINVERSION OF LISTED BUILDING LALEA IN MENTAL HEALTH CENTER	1992-1993	88.000,00
P.A.E.G.A.E	MEP DESIGN - BUILDING RENOVATION OF ELECTRICAL INSTALLATIONS GENERAL WAREHOUSE IN GREECE PIRAEUS	1992	29.000,00

RESTORATION-CONFIGURATION SQUARES AND FOREIGN SPACE

ENTITY	PROJECT DESCRIPTION	PROJECT PERIOD	MEP BUDGET IN EURO
PGCF BANK	MEP DESIGN OF INSTALLATION FOR RESTORATION FOR THE SQUARE CENTER IN SOUFLI	2010	100.000,00
MUNICIPALITY KALAMATAS	MEP DESIGN OF INSTALLATION FOR THE RESTORATION OF SQUARE YPAPANTIS MUNICIPALITY KALAMATAS	2010	300.000,00
MUNICIPALITY ARCHANON	MEP DESIGN OF INSTALLATION FOR THE REHABILITATION OF THE MUNICIPALITY OF THE OLD ELECTRICAL SYSTEM IN ARCHANON CRETE	2008-2010	250.000,00
ATHENS INTERNATIONAL AIRPORT	FINAL MEP DESIGN OF INSTALLATION FOR FACILITIES AT FOREST BEACH IN ARTEMIDA ATTICA	2006	
MUNICIPALITY OF VOULA	MEP DESIGN OF INSTALLATION FOR PLANT RENEWAL OF THE HEROES SQUARE VOULA	2005	650.000,00
MUNICIPALITY CHOLARGOU	MEP DESIGN OF INSTALLATION FOR CONFIGURATION AREA SCHOOLS COUNTRY YARDS CHOLARGOU	2003	90.000,00
MUNICIPALITY FALAISIAS	MEP DESIGN OF INSTALLATION FOR PLANT RENEWAL SQUARE LEONTARIOU ARKADIAS	2003	110.000,00
MUNICIPALITY OF TRIPOLI	MEP DESIGN OF INSTALLATION FOR PLANT RENEWAL AREOS SQUARE IN TRIPOLI	2001	300.000,00
VIPETVA	MEP DESIGN OF INSTALLATION FOR SQUARE FOR MUNICIPALITY PENINSULA OF CRETE	2000	59.000,00
MUNICIPALITY PSACHNON	MEP DESIGN OF INSTALLATION FOR PLANT RENEWAL CENTRAL SQUARE D. PSACHNON, EVIA	1999	117.000,00
MUNICIPALITY KALAMATAS	MEP DESIGN OF INSTALLATION FOR PLANT RENEWAL TO SQUARE YPAPANTIS	1999	88.000,00
MUNICIPALITY KALAMATAS	MEP DESIGN OF INSTALLATION FOR PLANT RENEWAL FOR HISTORICAL CENTRE IN KALAMATA	1998	293.000,00
COMMUNITY LAW STYRON	MEP DESIGN OF INSTALLATION FOR AREA COMMUNITY TO RENEWAL COASTAL N. STYRA EYVOIAS	1998	352.000,00
MINISTRY OF CULTURE	MEP DESIGN OF INSTALLATION FOR TOTAL PROMOTION ACROPOLIS N. CASTLE SIFNOU	1998	176.000,00
MUNICIPALITY ILIOUPOLIS	MEP DESIGN OF INSTALLATION FOR RENEWAL STREAM 'PIKRODAFNIS' ILIOUPOLI	1998	62.000,00

ENERGY STUDIES

ENTITY	PROJECT DESCRIPTION	PROJECT PERIOD	MEP BUDGET IN EURO
POSTAL SAVINGS BANK SA	ENERGY STUDY FOR MAIN BUILDING POSTAL SAVINGS PESMAZOGLOU	2010	
POSTAL SAVINGS BANK SA	ENERGY STUDY FOR MAIN BUILDING POSTAL SAVINGS IN PIRAEUS	2010	
POSTAL SAVINGS BANK SA	ENERGY STUDY FOR MAIN BUILDING POSTAL SAVINGS FOR DIFFERENT STORES	2010	
GAS SUPPLY COMPANY OF ATTICA SA	MEP DESIGN AND SUPERVISION FOR INSTALLATION UNITS CO-PRODUCTION OF ELECTRICITY - HEAT-COOL USING NATURAL GAS TO THE GENERAL HOSPITAL " EVANGELISMOS " AND FULL VERSION OF STUDIES AND SUBMISSION FOR THE ISSUANCE AND INTEGRATION IN ACTION 2.1.4 OF THE OPERATIONAL PROGRAMME COMPETITIVENESS	2005	3.500.000,00
GAS SUPPLY COMPANY OF ATTICA SA	MEP DESIGN AND SUPERVISION FOR INSTALLATION UNITS CO-PRODUCTION OF ELECTRICITY - HEAT-COOL USING NATURAL GAS TO THE GENERAL HOSPITAL " GENIMATAS " AND FULL VERSION OF STUDIES AND SUBMISSION FOR THE ISSUANCE AND INTEGRATION IN ACTION 2.1.4 OF THE OPERATIONAL PROGRAMME COMPETITIVENESS	2005	2.000.000,00
GAS SUPPLY COMPANY OF ATTICA SA	MEP DESIGN AND SUPERVISION FOR INSTALLATION UNITS CO-PRODUCTION OF ELECTRICITY - HEAT-COOL USING NATURAL GAS TO THE GENERAL HOSPITAL " SISMANOGLIO " AND FULL VERSION OF STUDIES AND SUBMISSION FOR THE ISSUANCE AND INTEGRATION IN ACTION 2.1.4 OF THE OPERATIONAL PROGRAMME COMPETITIVENESS	2005	1.700.000,00
GAS SUPPLY COMPANY OF ATTICA SA	MEP DESIGN AND SUPERVISION FOR INSTALLATION UNITS CO-PRODUCTION OF ELECTRICITY - HEAT-COOL USING NATURAL GAS TO THE GENERAL " KAT " HOSPITAL AND FULL VERSION OF STUDIES AND SUBMISSION FOR THE ISSUANCE AND INTEGRATION IN ACTION 2.1.4 OF THE OPERATIONAL PROGRAMME COMPETITIVENESS	2005	1.600.000,00
GAS SUPPLY COMPANY OF ATTICA SA	MEP DESIGN AND SUPERVISION FOR INSTALLATION UNITS CO-PRODUCTION OF ELECTRICITY - HEAT-COOL USING NATURAL GAS TO THE GENERAL " ATTIKON " HOSPITAL AND FULL VERSION OF STUDIES AND SUBMISSION FOR THE ISSUANCE AND INTEGRATION IN ACTION 2.1.4 OF THE OPERATIONAL PROGRAMME COMPETITIVENESS	2005	1.700.000,00
NATIONAL MUSEUM OF CONTEMPORARY ART (E.M.S.T.) (FORMER FACTORY FIX)	ENERGY STUDY OF THE BUILDING OF THE NATIONAL MUSEUM OF CONTEMPORARY ART FORMER FACTORY FIX	2004	10.500.000,00
GENERAL SECRETARIAT FOR RESEARCH & TECHNOLOGY	ENERGY STUDY OF BUILDINGS AQUARIOUM I. Th. A.V.I.K-« THALASSOKOSMOS-CREAT AQUARIUM ».	2002	900.00,00
HOTEL CHRISTINA	ENERGY STUDY HOTEL "CHRISTINA"	2002	700.000,00

MINISTRY OF JUSTICE	ENERGY STUDY COURTHOUSE TRIKALON .	2000	2.935.000,00
GENERAL SECRETARIAT FOR RESEARCH & TECHNOLOGY	ENERGY STUDY FOR THE BUILDING OF RESEARCH AND TECHNOLOGY, I.T.H.A.V.I.K. IN Heraklion Crete.	1999	1.236.000,00

VARIOUS PROJECTS

ENTITY	PROJECT DESCRIPTION	PROJECT PERIOD	MEP BUDGET IN EURO
YPEPA	MEP DESIGN OF INSTALLATION FOR PRODUCTION FACILITIES WORKSHOP (AREA F KEA) IN MILITARY AIRPORT ELEFSINAS	2012	1.000.000,00
THE HUB SA	INSTALLATION FOR MULTIPURPOSE ROOM ON THE GROUND FLOOR, SMART - LOFT CERAMIC	2010	1.000.000,00
HENKEL SA	SUPERVISION AND MANAGEMENT PROJECT OFFICE RENOVATION HELKEN - RILKEN IN ATHENS	2008	1.000.000,00
CASTOR SA	MEP DESIGN OF INSTALLATION FOR ELECTRIC OVERPASS AND INTERCHANGES NODE ACCESS ROADS, OSE IN LARISSA	2007	150.000,00
E.T.A. SA	MEP DESIGN OF INSTALLATION FOR OPERATING UNIT SEWAGE TREATMENT OF ARCHAEOLOGICAL SITES DIROS	2006	120.000,00
E.T.A. SA	MARINA FIRE STUDY ALIMOIY	2004	180.000,00
DEPANOM SA	ENVIRONMENTAL IMPACT OF HOSPITAL VEROIAS	2004	
MINISTRY OF ENVIRONMENT	MEP DESIGN OF INSTALLATION FOR BYPASS JUNCTION CHALKIDA- OVERPASS CHARAVGIS	2004	
THALASSOCOSMOS - CRETAQUARIUM GENERAL SECRETARIAT FOR RESEARCH & TECHNOLOGY	MEP DESIGN OF INSTALLATION FOR AQUARIUM PLANTS IMBC IN HERACLION CRETE	2002	900.000,00
ERGOSE SA	DESIGN SPECIFICATIONS AND APPLICATION SECURITY AUTHORITIES (RISK ANALYSIS) FILM 60 km	2001-2002	
ERGOSE SA	ELECTRIC OVERPASS, ELECTRICAL DESIGN OVER NEW LINE BETWEEN S. TITHOREAS – DOMOKOY	2001	250.000,00
ERGOSE SA	MEP DESIGN OF INSTALLATION FOR RAIL TUNNEL BLACK TIME	2001	150.000,00
ERGOSE SA	ELECTRICAL DESIGN FOR OVERPASS IN LARISSA S. LINE OF NEW HIGH SPEED ATHENS – THESSALONIKI	2001	100.000,00
ERGOSE SA	ELECTRICAL DESIGN OF OVERPASS THIVON – MOURIKIOU	2001	100.000,00
MUNICIPALITY MESOLOGGIOY	MEP DESIGN OF INSTALLATION FOR RESIDENTIAL REHABILITATION HOMELESS GYPSIES	1999 - 2000	176.000,00
VIPETVA	MEP DESIGN OF INSTALLATION FOR NURSING HOME MUNICIPALITY PENINSULA OF CRETE	2000	29.000,00
E.M.P.	MEP DESIGN OF INSTALLATION FOR (FINAL) LAVRION TECHNOLOGY PARK	1999	205.000,00
KAPE	MEP DESIGN OF INSTALLATION FOR MULTI-PURPOSE BUILDING FACILITIES – HOSTEL	1999	147.000,00

GENERAL SECRETARIAT FOR RESEARCH AND TECHNOLOGY	MEP DESIGN OF INSTALLATION FOR THE FOUNDATION FOR RESEARCH AND TECHNOLOGY (FORTH) / IMBB EXPERIMENT IN-BUILDING-KING VILLAGE IN HERAKLION CRETE	2000	200.000,00
MINISTRY OF AGRICULTURE	MEP DESIGN OF INSTALLATION FOR GENETIC IMPROVEMENT CENTER IN ANIMALS Ioannina (K.G.V.Z.)	1999-2001	550.000,00
A SINGLE LINK MUNICIPALITIES OF ATTICA (ACMAR)	MEP DESIGN OF INSTALLATION FOR PLANT WASTE TRANSFER STATION ATHENS AND ITS NEIGHBORING MUNICIPALITIES	1999	1.174.000,00
MINISTRY OF AGRICULTURE	MEP DESIGN OF INSTALLATION FOR GENETIC IMPROVEMENT CENTER IN ANIMALS IOANNINA (K.G.V.Z.)	1999-2001	550.000,00
MINISTRY OF AGRICULTURE	MEP DESIGN OF INSTALLATION FOR PLANT GENETIC IMPROVEMENT CENTRE ANIMAL IOANNINON	1998	543.000,00
ATEK SA	MEP DESIGN OF INSTALLATION FOR ELECTRIC LIGHTING ROAD ENTRANCE OF THE CITY LOYTRAKIOY	1998	411.000,00
TEI IRAKLEIOU	MEP DESIGN OF INSTALLATION FOR GYM AND MULTI- PURPOSE ROOM	1997	734.000,00
FENIX. SA	MEP DESIGN OF INSTALLATION OF CULTURAL CENTER (CONVENTION CENTER 1000 MEN)	1997	264.000,00
MUNICIPALITY PAIANIAS	MEP DESIGN OF INSTALLATION FOR BUILDING FACILITIES WITH SEVERAL MULTIPURPOSE AREAS	1996	117.000,00
MUNICIPALITY OF ST. JOHN RENTI	MEP DESIGN OF INSTALLATION FOR RESTORATION OF OLD BUILDING AND LANDSCAPING SURROUNDINGS	1996	264.000,00
MINISTRY OF CULTURE	MEP DESIGN OF INSTALLATION FOR REHABILITATION FACILITIES FOR LISTED BUILDING IN PEIREAUS	1995	205.000,00
MINISTRY OF CULTURE	MEP DESIGN OF INSTALLATION FOR REHABILITATION FACILITIES FOR LISTED BUILDING ON ROUTE PSAROMILIGKON 21	1995	186.000,00
COMMUNITY KYPSELIS AIGINAS	MEP DESIGN OF INSTALLATION FOR BUILDING INSTALLATION CULTURAL CENTRE	1994	26.000,00
P.A.E.G.A.E.	MEP DESIGN OF INSTALLATION FOR LAUNDRY FACILITIES FOR VEHICLES IN MAGOULA, ATTIKH	1992-1993	29.000,00
TOUBOUROS P.-S. KOROLOGOS	MEP DESIGN OF INSTALLATION IN CENTRES MONITORING WETLAND IN AITOLIKO, IN KERKINI SERRES AND THE NEW KESSANI XANTHI	1992	440.000,00
ALEXANDRAKEIA LEGACIES	MEP DESIGN OF INSTALLATION FOR NEW NURSURING HOMES IN KALAMATA	1991-1994	458.000,00
MUNICIPALITY ILIOUPOLIS	MEP DESIGN OF INSTALLATION FOR NURSURING HOUSE IN MUNICIPALITY ILIOUPOLIS	1991-1992	37.000,00
POLYGON O.E.	MEP DESIGN OF INSTALLATION FOR CLUBS FACILITIES TOTAL SURFACE 1.300m2 PYLOS MESSINIAS	1990-1991	88.000,00

MUNICIPAL CORPORATION	MEP DESIGN OF INSTALLATION FOR CONFIGURATION	1990-1991	411.000,00
TOURIST. DEVELOPMENT	NATURAL BEACH BATHS		
LOYTRAKIOY -			
PERACHORAS (D.E.T.A.L.P.)			

SELECTED PICTURES

EUPHORIA RETREAT

ΕΥΟΙΚΟΣ Α.Ε.

Mep design and supervision for NEW 5*
HOTEL and SPA in Mistras Lakonias



**AL MATAR HOTEL
DEVELOPMENT
DOHA, QATAR**



AL MATAR HOTEL DEVELOPMENT
Doha, Qatar. New 11-storey hotel,
suites, restaurant, conference and
function rooms. The engineering
services included in the Works include
design and supervision of the
electromechanical installations.



**DAIOS COVE LUXURY
RESORT & VILLAS
HELLAS HOLIDAY HOTELS**



Construction design of M and E installations and supervision for the 5 stars "DAIOS COVE LUXURY RESORT & VILLAS – HELLAS HOLIDAY HOTELS" Crete Island.



MOTHER HOSPITAL



Design of M and E installations and supervision, modernization in Surgery Unit, creation Day Clinic Unit in the first floor of "MOTHER" hospital.

**MOTHER HOSPITAL
PEDIATRIC CLINIC**



Design of M and E installations and supervision of Pediatric Clinic at the 5th floor of "MOTHER" hospital.



NATIONAL MUSEUM OF CONTEMPORARY ART



Study and supervision of M and E facilities for the NATIONAL MUSEUM OF CONTEMPORARY ART, to Fix listed building.

**HELONA RESORT - KOS
DOUBLETREE BY HILTON**



Construction design of M and E
installation for the 5 star “HELONA
RESORT – DOUBLETREE BY
HILTON” in Kos Island, 500 bed
capacities.



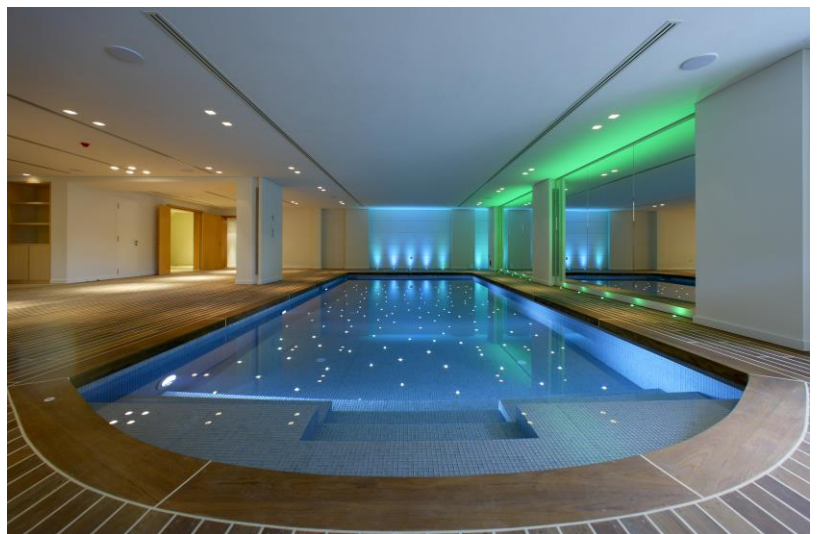
POSEIDON RESORT



Construction design of M and E installations and supervision of refurbishment for the 5star "POSEIDON RESORT HOTEL" in Loutraki-Technical Consultancy.



RECIDENCES



Supervision electromechanical
independent housing in Ekali

HOLMES PLACE

Design of M and E installations and supervision of HOLMES PLACE, fitness and wellness center with indoor pool in Glefada.

